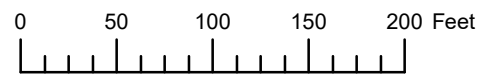


THIS MAP WAS PREPARED FOR ASSESSMENT PURPOSE ONLY



N.W. 1/4 S.E. 1/4 SEC. 29 T. 3N. R. 10W. W.M.

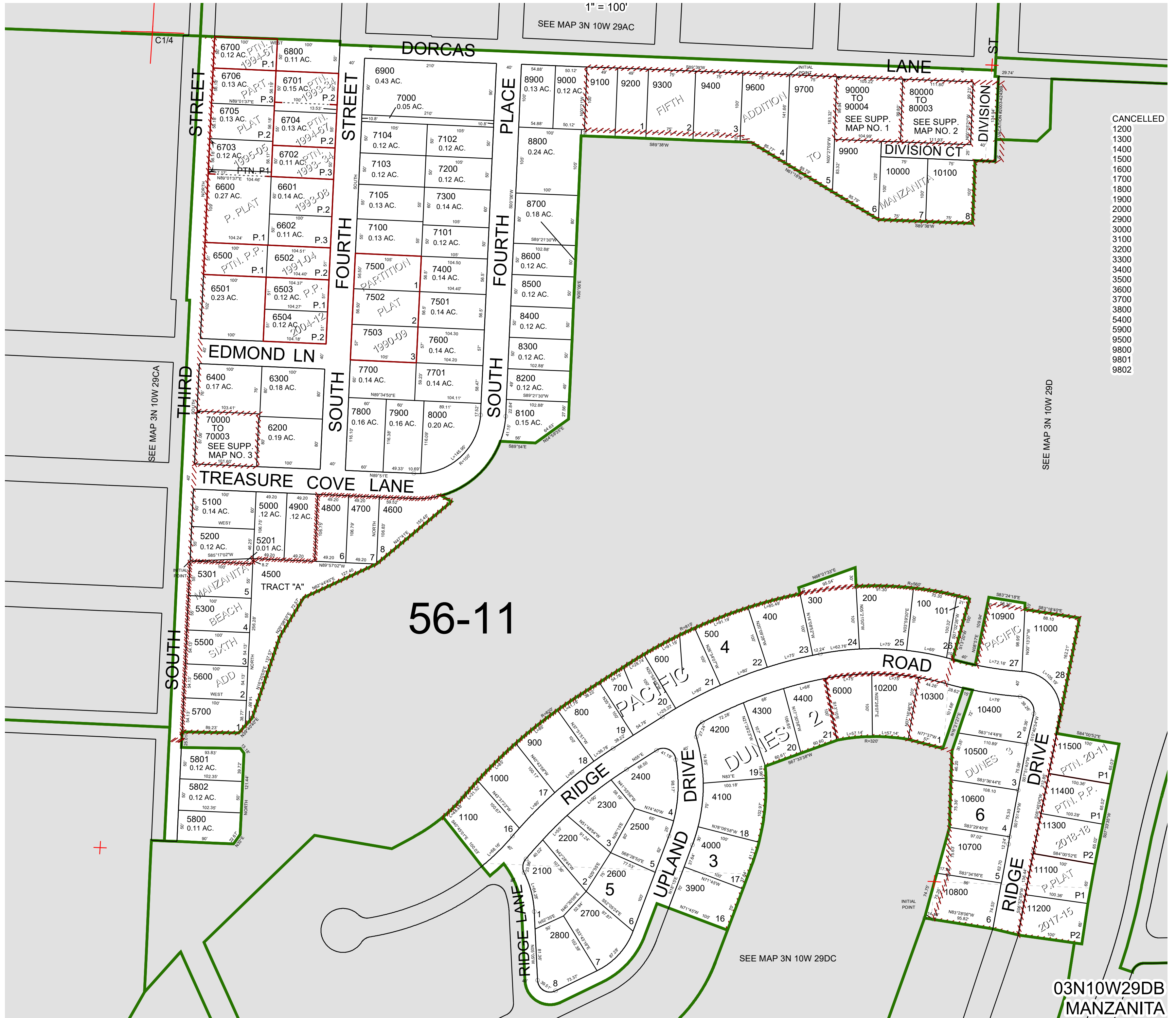
TILLAMOOK COUNTY

03N10W29DB

MANZANITA

1" = 100'

SEE MAP 3N 10W 29AC



- CANCELLED
- 1200
- 1300
- 1400
- 1500
- 1600
- 1700
- 1800
- 1900
- 2000
- 2900
- 3000
- 3100
- 3200
- 3300
- 3400
- 3500
- 3600
- 3700
- 3800
- 5400
- 5900
- 9500
- 9800
- 9801
- 9802

SEE MAP 3N 10W 29D

SEE MAP 3N 10W 29DC

56-11

03N10W29DB

MANZANITA

Revised 12/09/20, WS