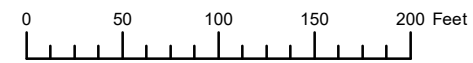


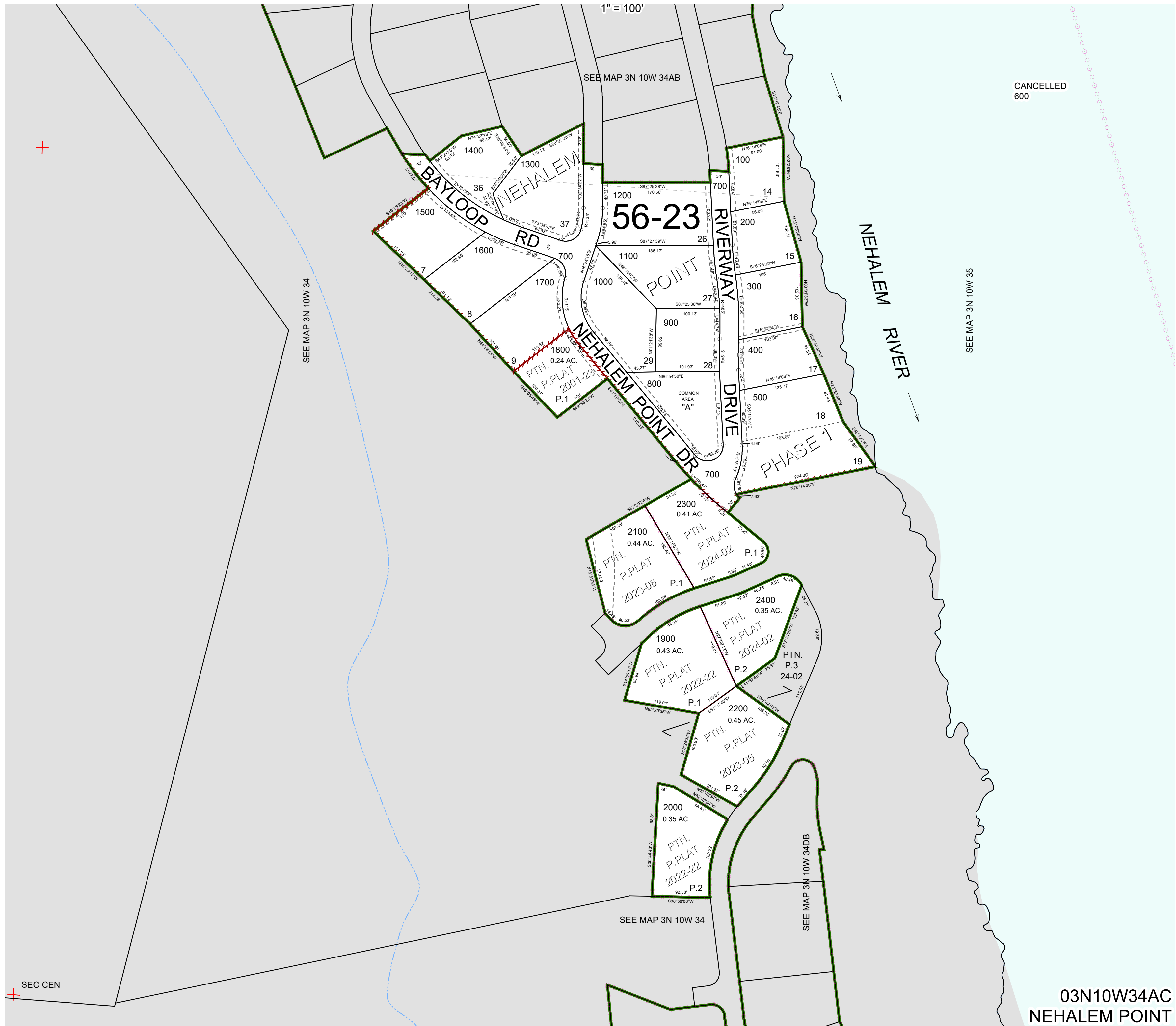
THIS MAP WAS PREPARED FOR ASSESSMENT PURPOSE ONLY



S.W.1/4 N.E.1/4 SEC.34 T.3N. R.10W. W.M.

TILLAMOOK COUNTY

03N10W34AC
NEHALEM POINT



CANCELLED
600

SEE MAP 3N 10W 34

SEE MAP 3N 10W 35

SEE MAP 3N 10W 34

SEE MAP 3N 10W 34DB

SEC CEN

03N10W34AC
NEHALEM POINT