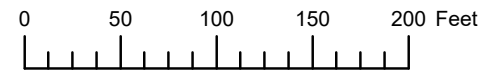
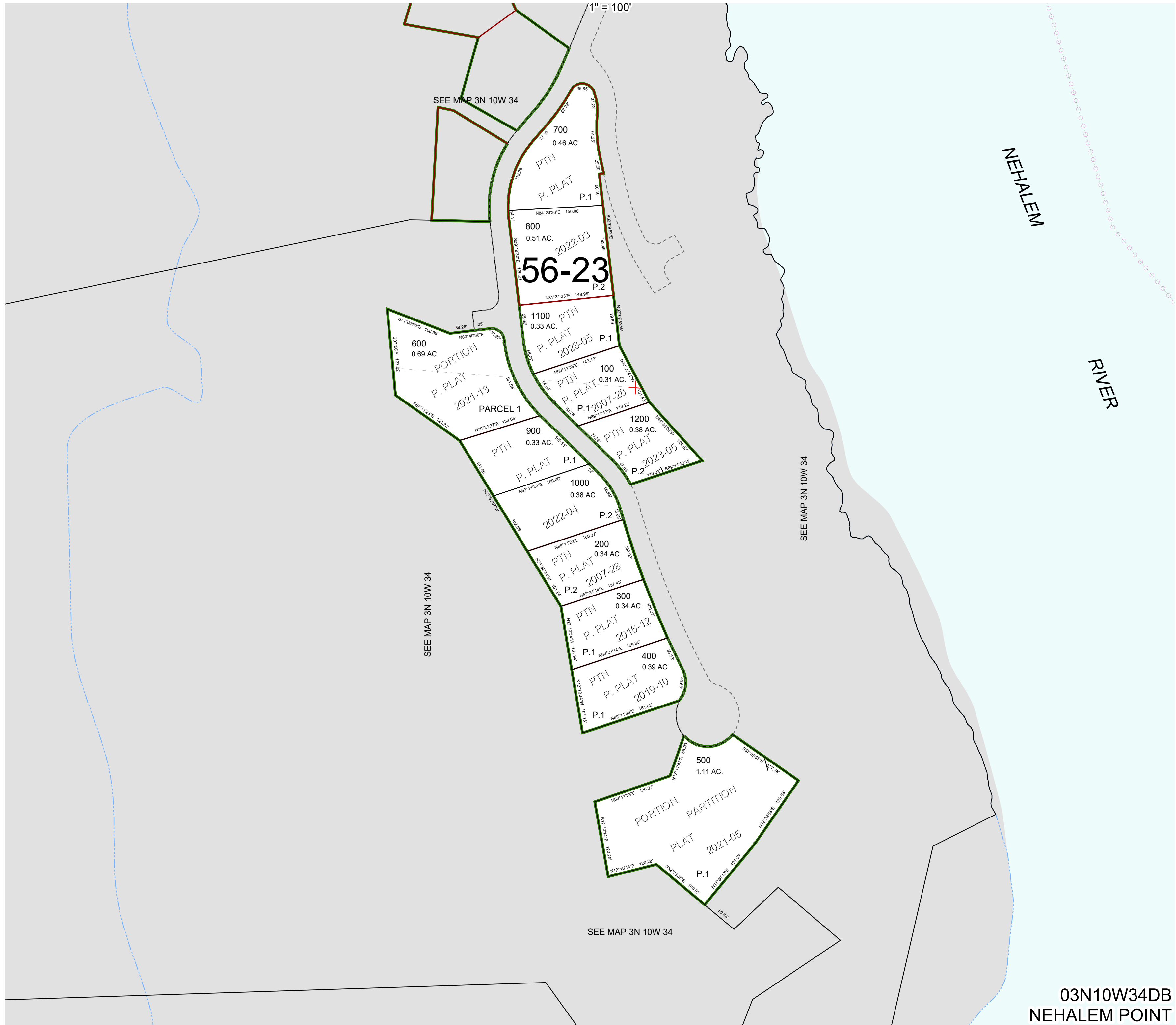


THIS MAP WAS PREPARED FOR
ASSESSMENT PURPOSE ONLY



N.W.1/4 S.E.1/4 SEC.34 T.3N. R.10W. W.M.
TILLAMOOK COUNTY

03N10W34DB
NEHALEM POINT



03N10W34DB
NEHALEM POINT

Revised 4/28/23, WS