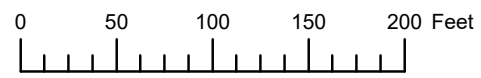


THIS MAP WAS PREPARED FOR ASSESSMENT PURPOSE ONLY

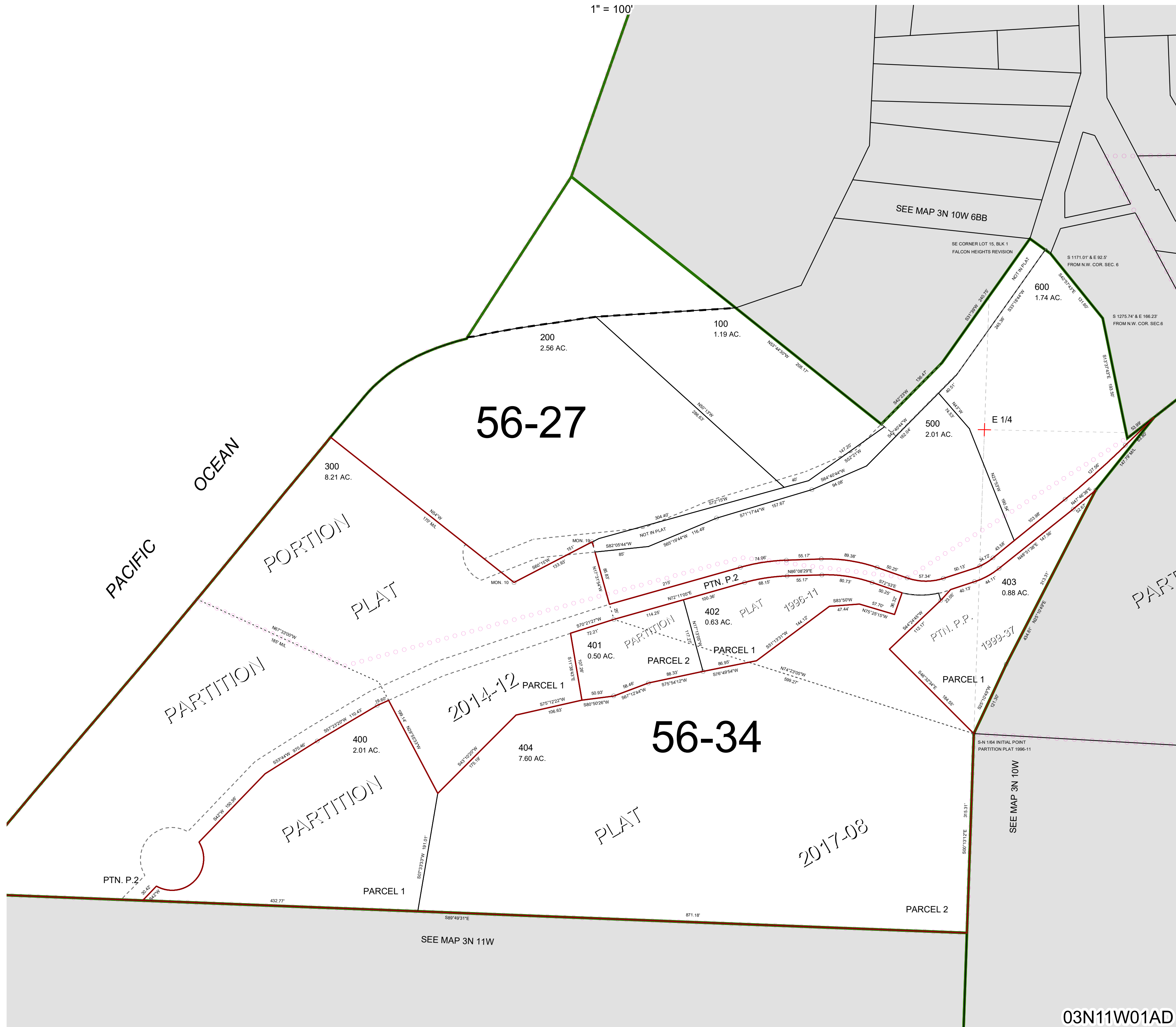


S.E. 1/4 N.E. 1/4 SEC. 1 T.3N. R.11W. W.M.

TILLAMOOK COUNTY

03N11W01AD

1" = 100'



56-27

56-34

03N11W01AD

Revised 12/15/21, WS