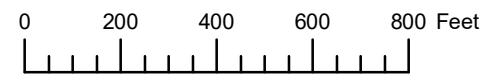


THIS MAP WAS PREPARED FOR ASSESSMENT PURPOSE ONLY

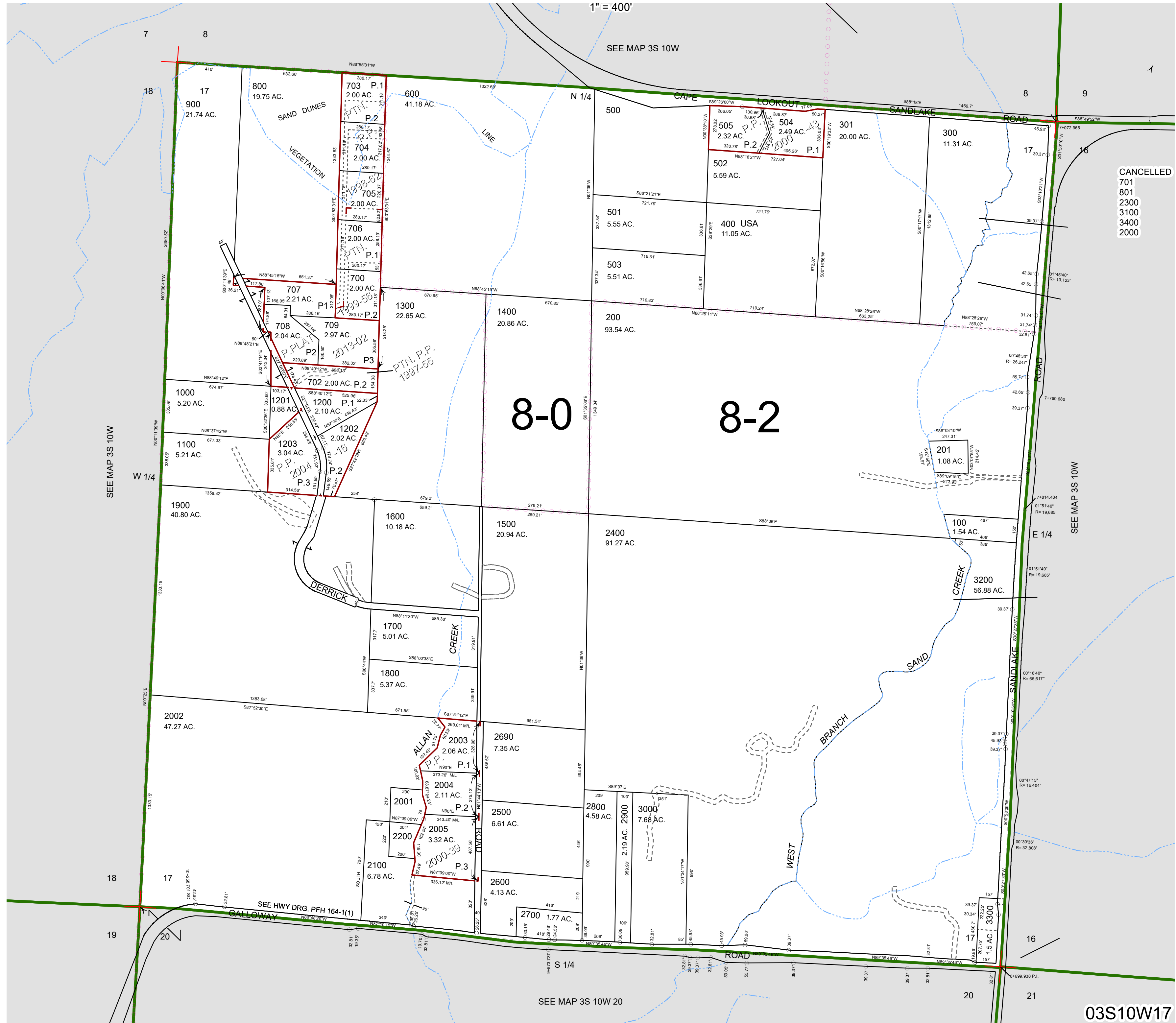


SECTION 17 T.3S. R.10W. W.M.

TILLAMOOK COUNTY

03S10W17

1" = 400'



CANCELLED  
701  
801  
2300  
3100  
3400  
2000

8-0

8-2

03S10W17

Revised 08/07/20, WS