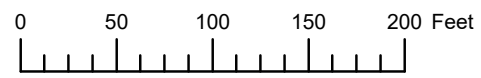


THIS MAP WAS PREPARED FOR ASSESSMENT PURPOSE ONLY

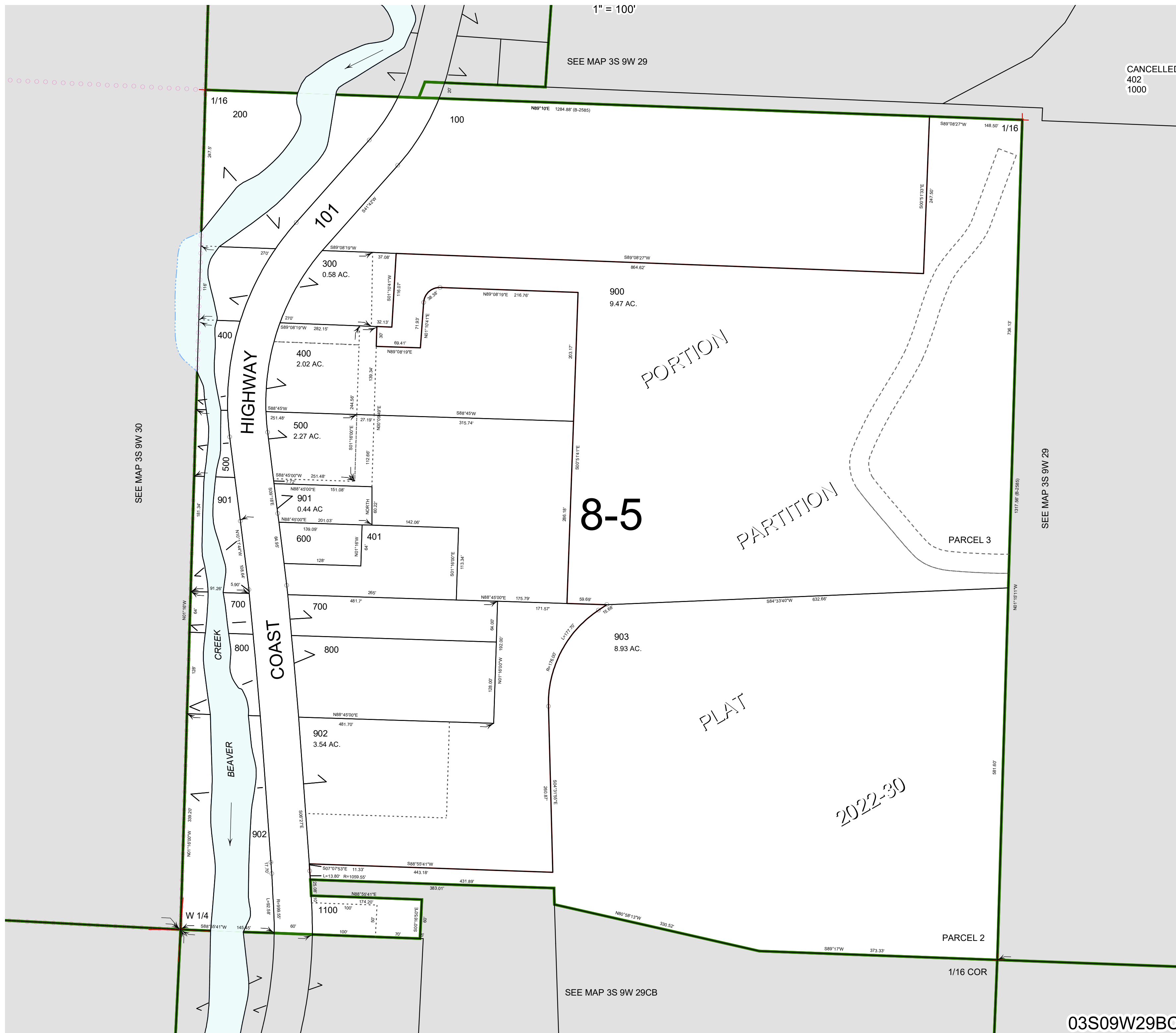


S.W.1/4 N.W.1/4 SEC.29 T.3S. R.9W. W.M.

TILLAMOOK COUNTY

1" = 100'

03S09W29BC



SEE MAP 3S 9W 30

SEE MAP 3S 9W 29

SEE MAP 3S 9W 29CB

03S09W29BC

Revised 2/14/23, WS