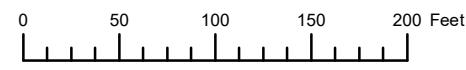


THIS MAP WAS PREPARED FOR ASSESSMENT PURPOSE ONLY

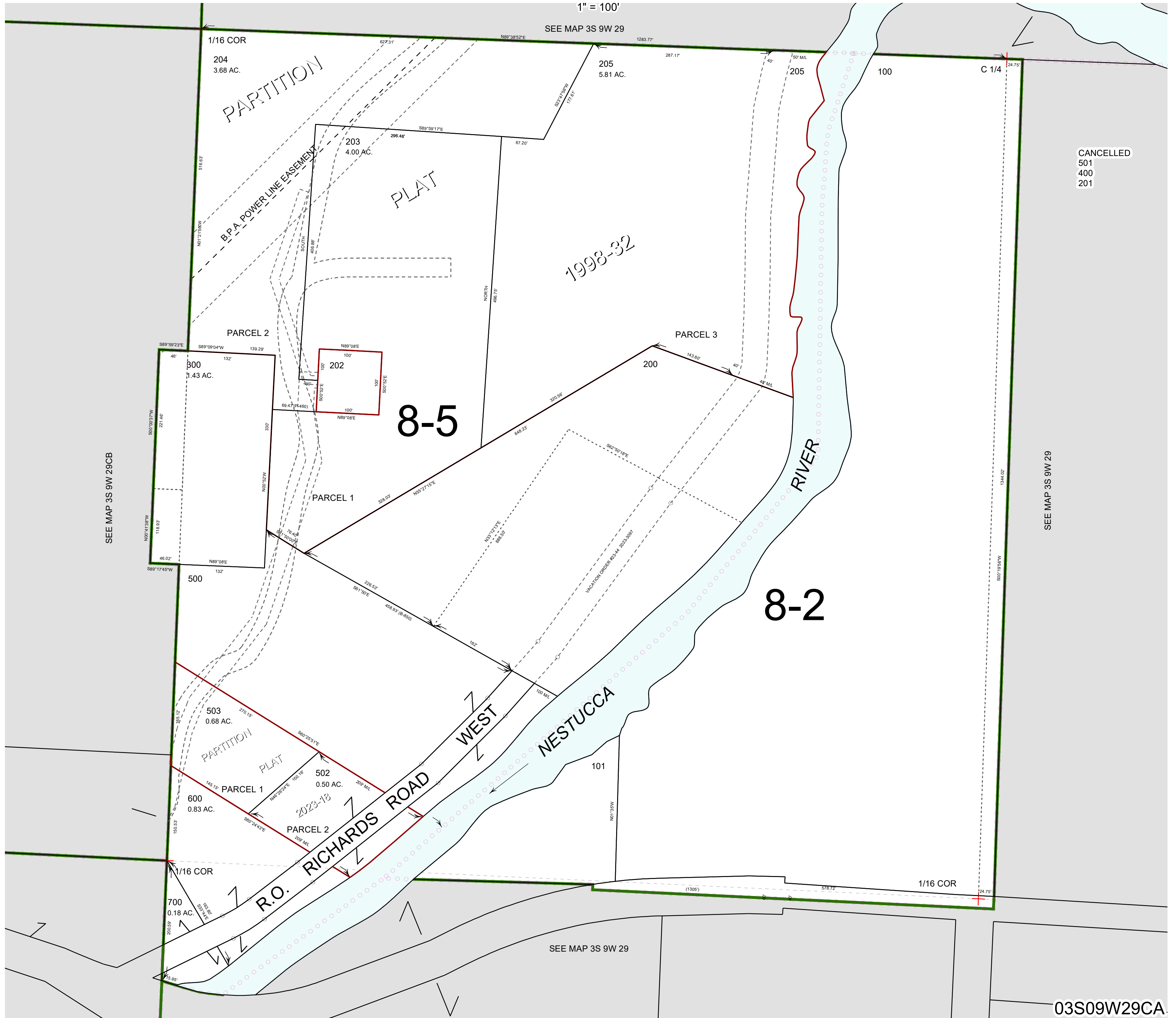


N.E. 1/4 S.W. 1/4 SEC. 29 T. 3S. R. 9W. W.M.

TILLAMOOK COUNTY

1" = 100'

03S09W29CA



CANCELLED
501
400
201

SEE MAP 3S 9W 29CB

SEE MAP 3S 9W 29

SEE MAP 3S 9W 29

03S09W29CA

Revised 12/01/23, WS