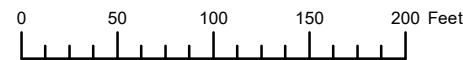


THIS MAP WAS PREPARED FOR ASSESSMENT PURPOSE ONLY



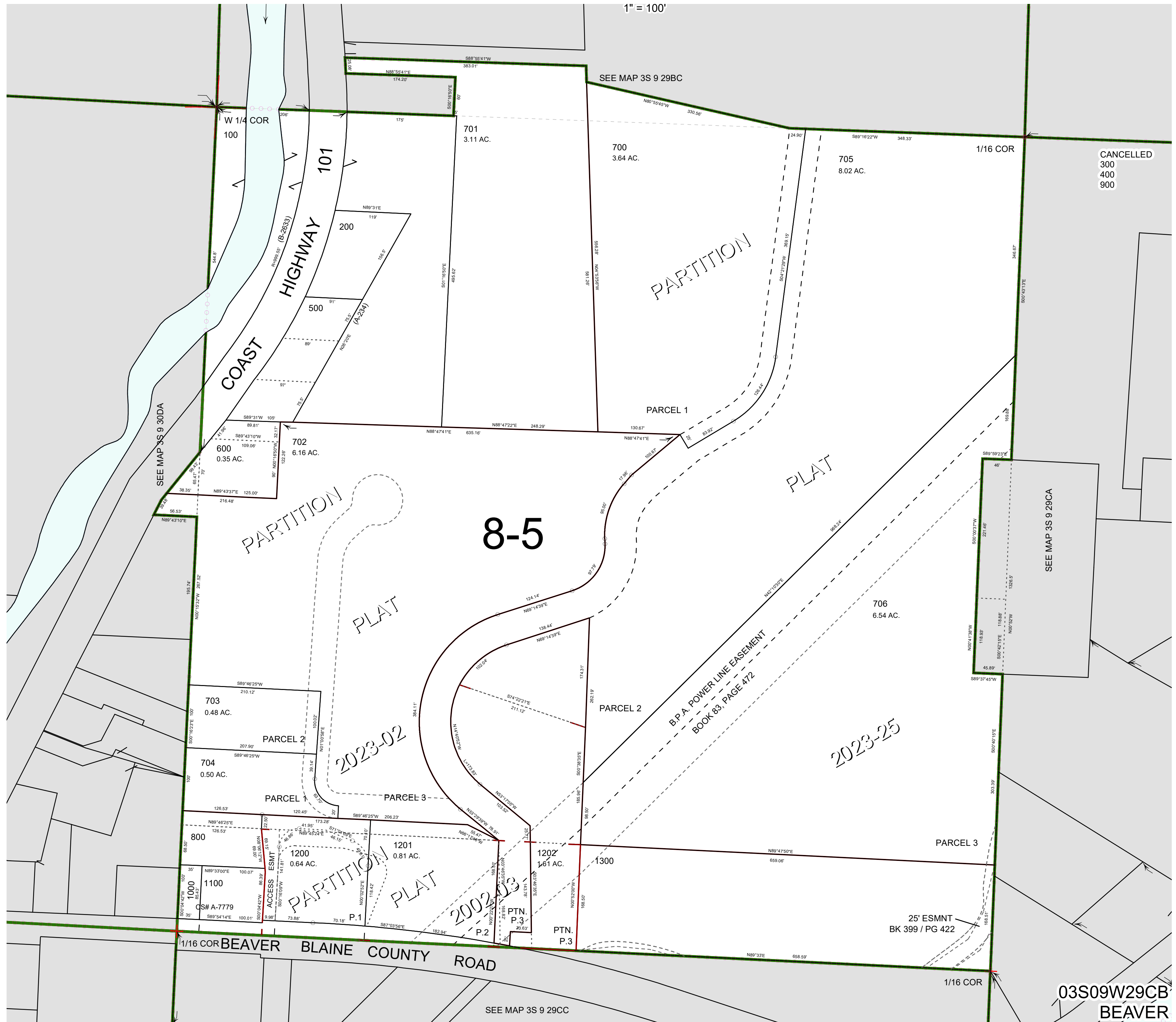
N.W.1/4 S.W.1/4 SEC.29 T.3S. R.9W. W.M.

TILLAMOOK COUNTY

03S09W29CB

BEAVER

1" = 100'



CANCELLED
300
400
900

SEE MAP 3S 9 29CA

03S09W29CB

BEAVER

Revised 12/29/23, WS