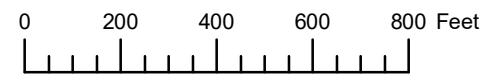


THIS MAP WAS PREPARED FOR ASSESSMENT PURPOSE ONLY

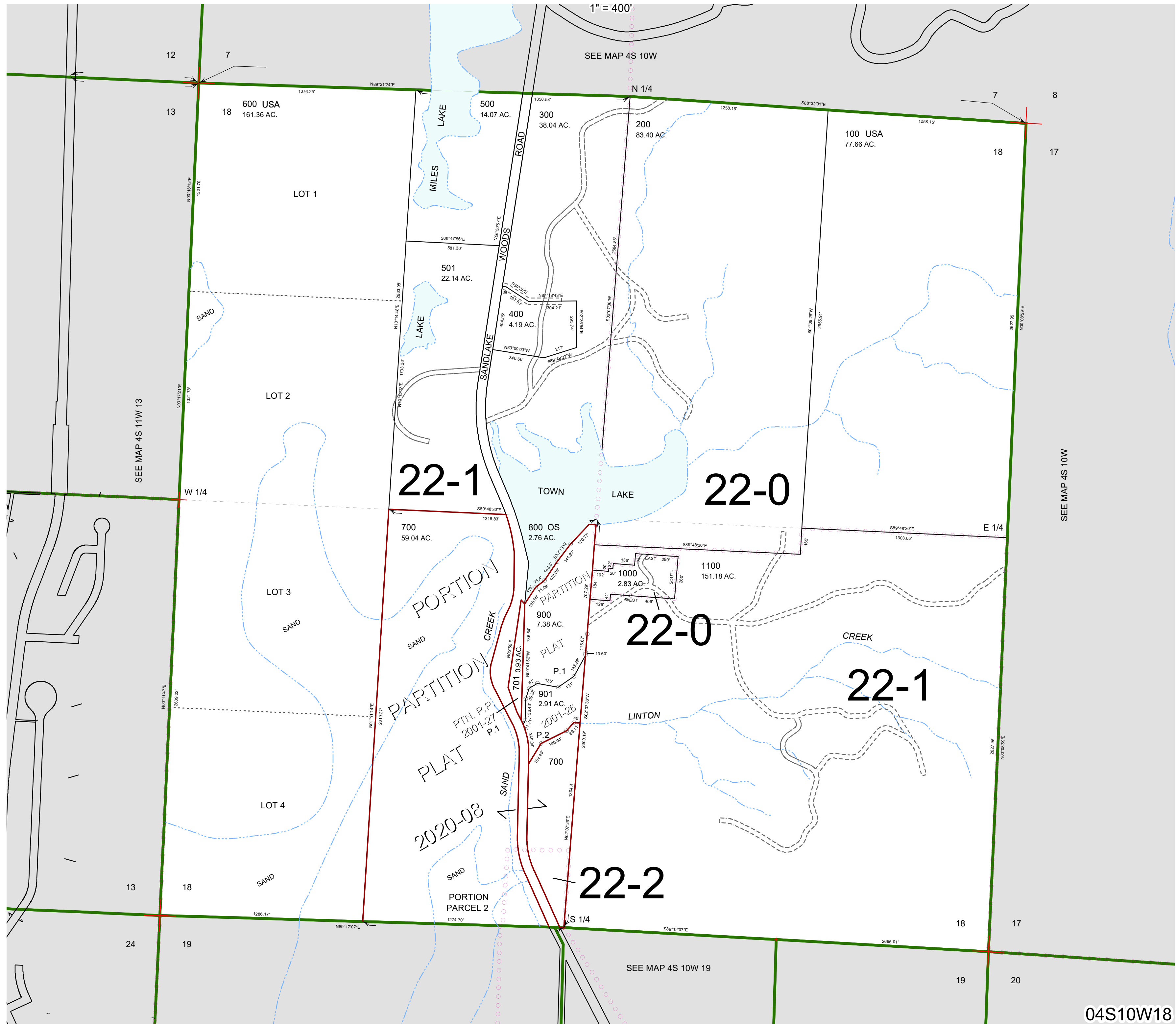


SECTION 18 T.4S. R.10W. W.M.

TILLAMOOK COUNTY

04S10W18

1" = 400'



SEE MAP 4S 11W 13

SEE MAP 4S 10W

SEE MAP 4S 10W

SEE MAP 4S 10W 19

04S10W18

Revised 08/07/20, WS