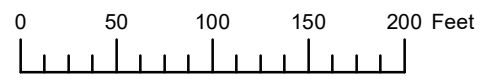


THIS MAP WAS PREPARED FOR ASSESSMENT PURPOSE ONLY



N.W.1/4 S.W.1/4 SEC.23 T.4S. R.10W. W.M.

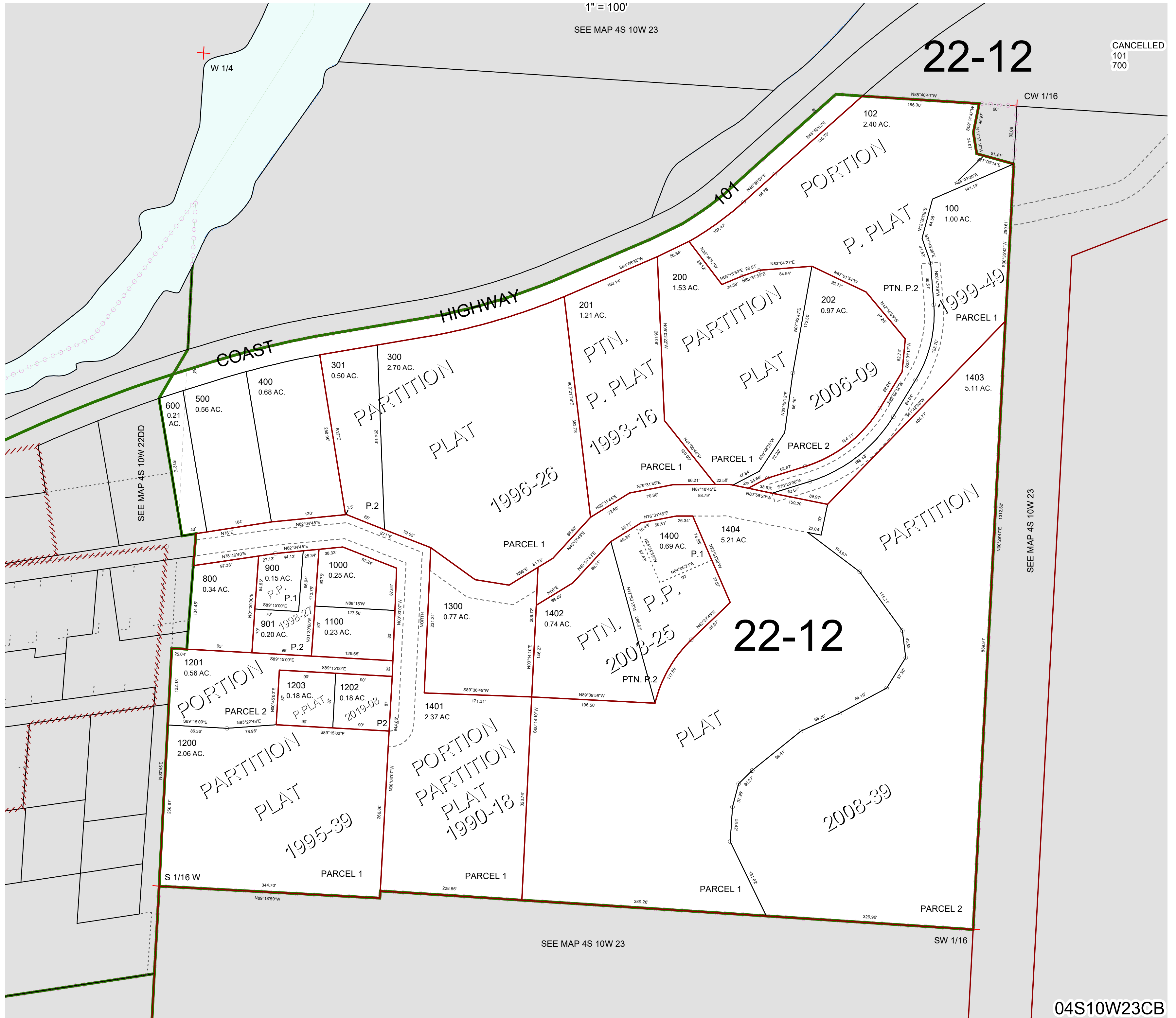
TILLAMOOK COUNTY

1" = 100'

SEE MAP 4S 10W 23

04S10W23CB

CANCELLED
101
700



22-12

22-12

SEE MAP 4S 10W 23

SEE MAP 4S 10W 23

04S10W23CB

Revised 12/19/19, WS