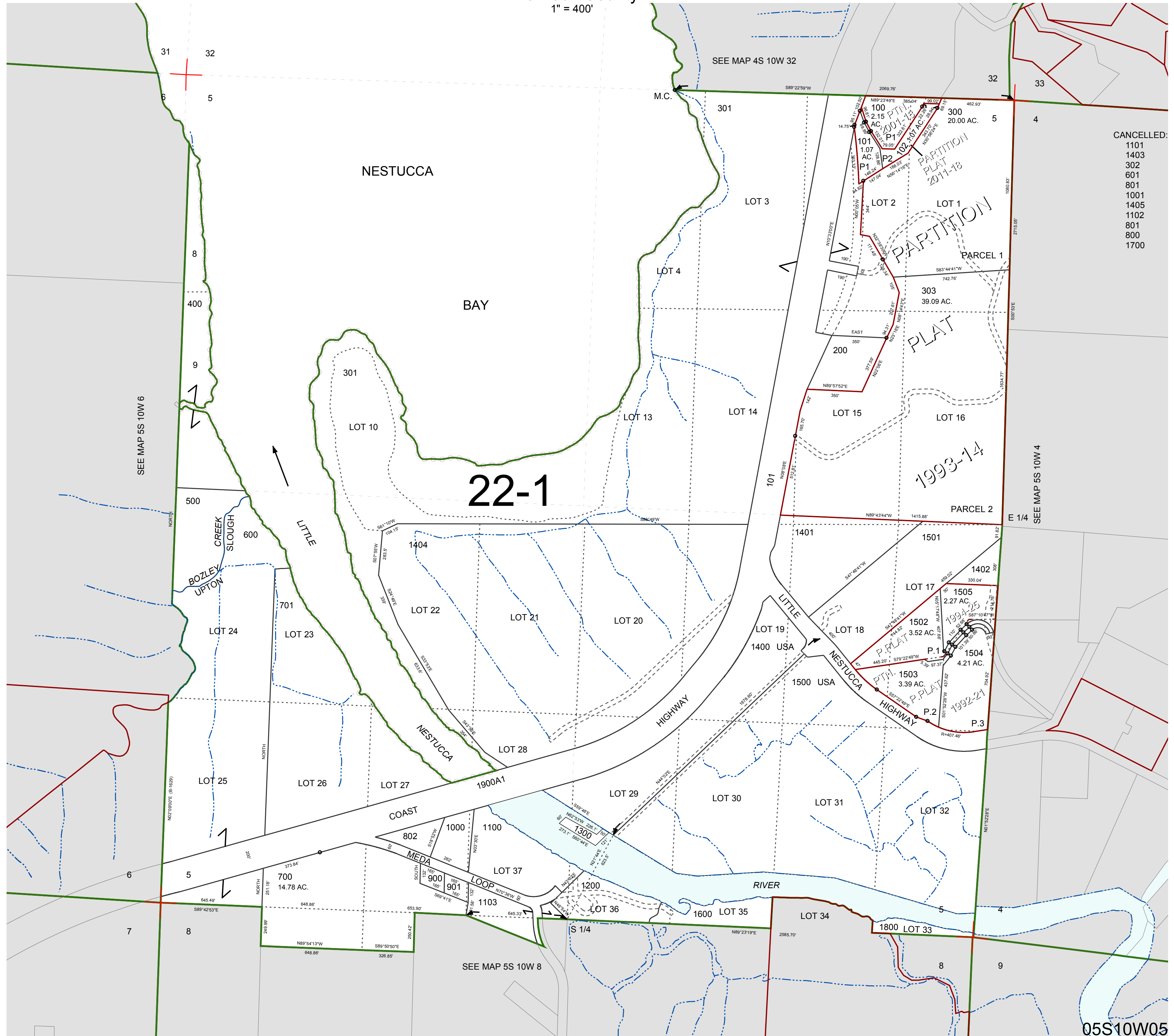


FOR ASSESSMENT AND TAXATION ONLY, NOT SUITABLE FOR LEGAL, ENGINEERING, OR SURVEY PURPOSES

SECTION 5 T.5S. R.10W. W.M.
Tillamook County
1" = 400'

05S10W05



CANCELLED:
1101
1403
302
601
801
1001
1405
1102
801
800
1700

05S10W05
REVISED 6/16/17, WS