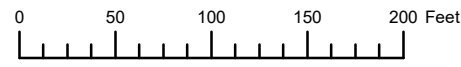


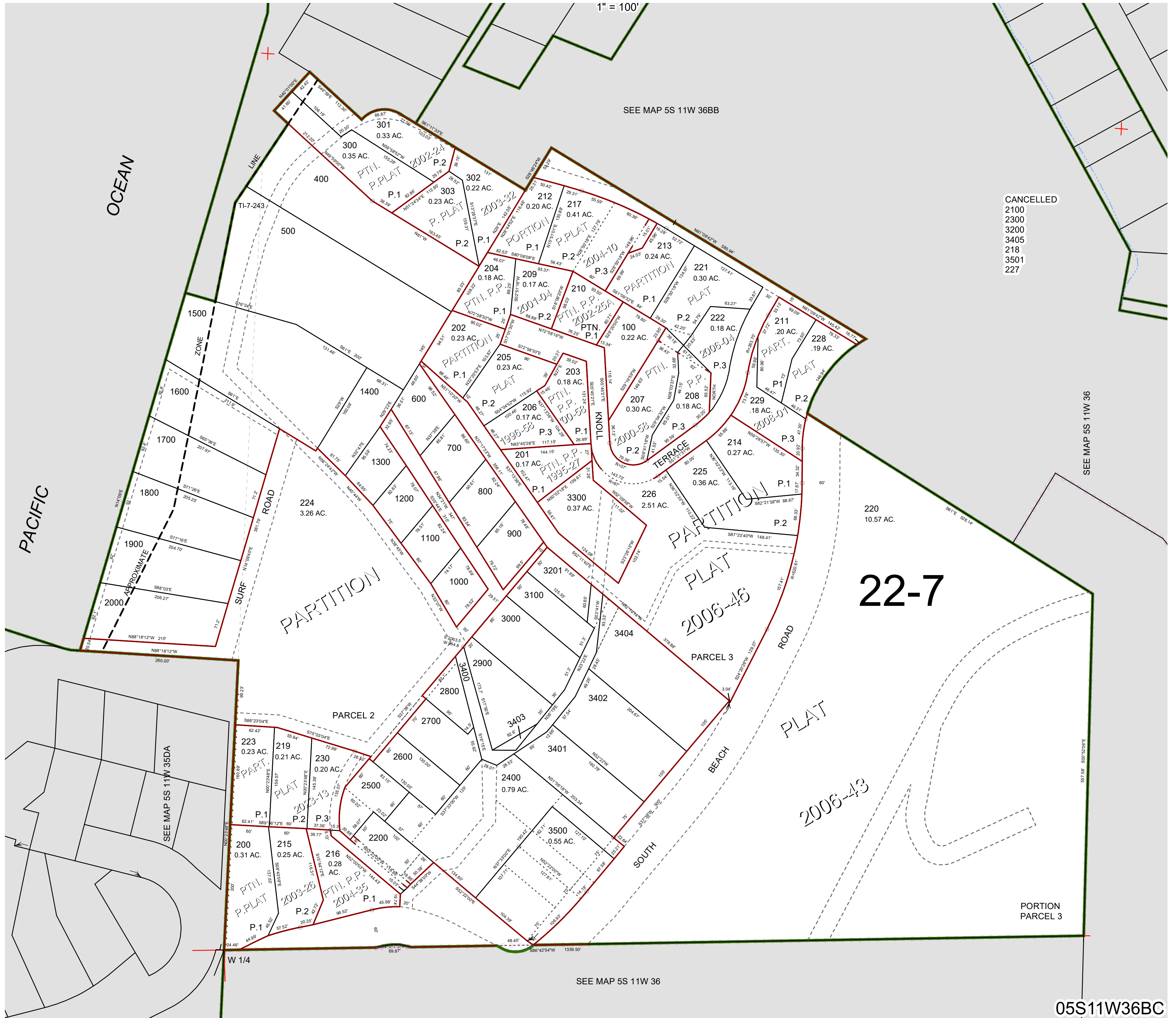
THIS MAP WAS PREPARED FOR ASSESSMENT PURPOSE ONLY



S.W. 1/4 N.W. 1/4 SEC. 36 T. 5S. R. 11W. W.M.

TILLAMOOK COUNTY

05S11W36BC



- CANCELLED
- 2100
- 2300
- 3200
- 3405
- 218
- 3501
- 227

SEE MAP 5S 11W 36

05S11W36BC

Revised 3/28/24, WS