

<b>SUBAREA</b>	<b>DWELLING UNITS</b>	<b>STR LICENSE 2023</b>	<b>JULY 2023 %</b>	<b><u>NEW STR WAITLIST</u></b>	<b><u>ADJUSTED %</u></b>	<b>1%</b>	<b>1.5%</b>	<b>2%</b>
<b>NEAHKAHNE</b>	409	82	20%	<b>0</b>	<b>20%</b>	86 <b>4</b>	88 <b>6</b>	90 <b>8</b>
<b>BARVIEW/TWIN ROCKS/WATSECO</b>	254	39	15%	<b>1</b>	<b>16%</b>	43 <b>3</b>	44 <b>4</b>	46 <b>6</b>
<b>CAPE MEARES</b>	237	31	13%	<b>1</b>	<b>14%</b>	36 <b>4</b>	37 <b>5</b>	38 <b>6</b>
<b>OCEANSIDE</b>	693	129	19%	<b>0</b>	<b>19% (18.6%)</b>	139 <b>10</b>	142 <b>13</b>	146 <b>16</b>
<b>NETARTS</b>	766	102	13%	<b>2</b>	<b>14%</b>	115 <b>11</b>	119 <b>15</b>	123 <b>19</b>
<b>TIERRA DEL MAR</b>	235	51	22%	<b>2</b>	<b>23%</b>	56 <b>3</b>	58 <b>5</b>	59 <b>6</b>
<b>PACIFIC CITY/WOODS</b>	1392	316	23%	<b>7</b>	<b>23%</b>	334 <b>11</b>	341 <b>18</b>	348 <b>25</b>
<b>NEKOWIN</b>	908	179	20%	<b>1</b>	<b>20%</b>	191 <b>11</b>	195 <b>15</b>	200 <b>20</b>
<b>MANZANITA UGB</b>	362	41	11%	<b>1</b>	<b>12%</b>	47 <b>5</b>	49 <b>7</b>	51 <b>9</b>
<b>NEHALEM UGB</b>	493	16	3%	<b>0</b>	<b>3%</b>	20 <b>4</b>	22 <b>6</b>	25 <b>9</b>
<b>WHEELER UGB</b>	1	0	0%	<b>0</b>	<b>0%</b>	1	1	1
<b>ROCKAWAY BEACH UGB</b>	482	78	16%	<b>2</b>	<b>17%</b>	87 <b>7</b>	89 <b>9</b>	92 <b>12</b>
<b>GARIBALDI UGB</b>	3	0	0%	<b>0</b>	<b>0%</b>	1	1	1

\*Data subject to change. Revised July 19, 2023.

<b>SUBAREA</b>	<b>DWELLING UNITS</b>	<b>STR LICENSE 2023</b>	<b>JULY 2023 %</b>	<b><u>NEW STR WAITLIST</u></b>	<b><u>ADJUSTED %</u></b>	<b>1%</b>	<b>1.5%</b>	<b>2%</b>
<b>BAY CITY UGB</b>	39	0	0%	<b>0</b>	<b>0%</b>	1	1	1
<b>TILLAMOOK UGB</b>	179	0	0%	<b>0</b>	<b>0%</b>	2	3	4
<b>MOHLER</b>	8	0	0%	<b>0</b>	<b>0%</b>	1	1	2
<b>IDAVILLE</b>	84	0	0%	<b>0</b>	<b>0%</b>	1	1	2
<b>SISKEYVILLE</b>	48	0	0%	<b>0</b>	<b>0%</b>	1	1	1
<b>BEAVER</b>	83	2	2%	<b>0</b>	<b>2%</b>	N/C	3	N/C
<b>HEBO</b>	70	0	0%	<b>0</b>	<b>0%</b>	1	1	1
<b>CLOVERDALE</b>	113	0	0%	<b>0</b>	<b>0%</b>	1	2	2
<b>TOTALS</b>		<b>1,066</b>		<b>17</b>				

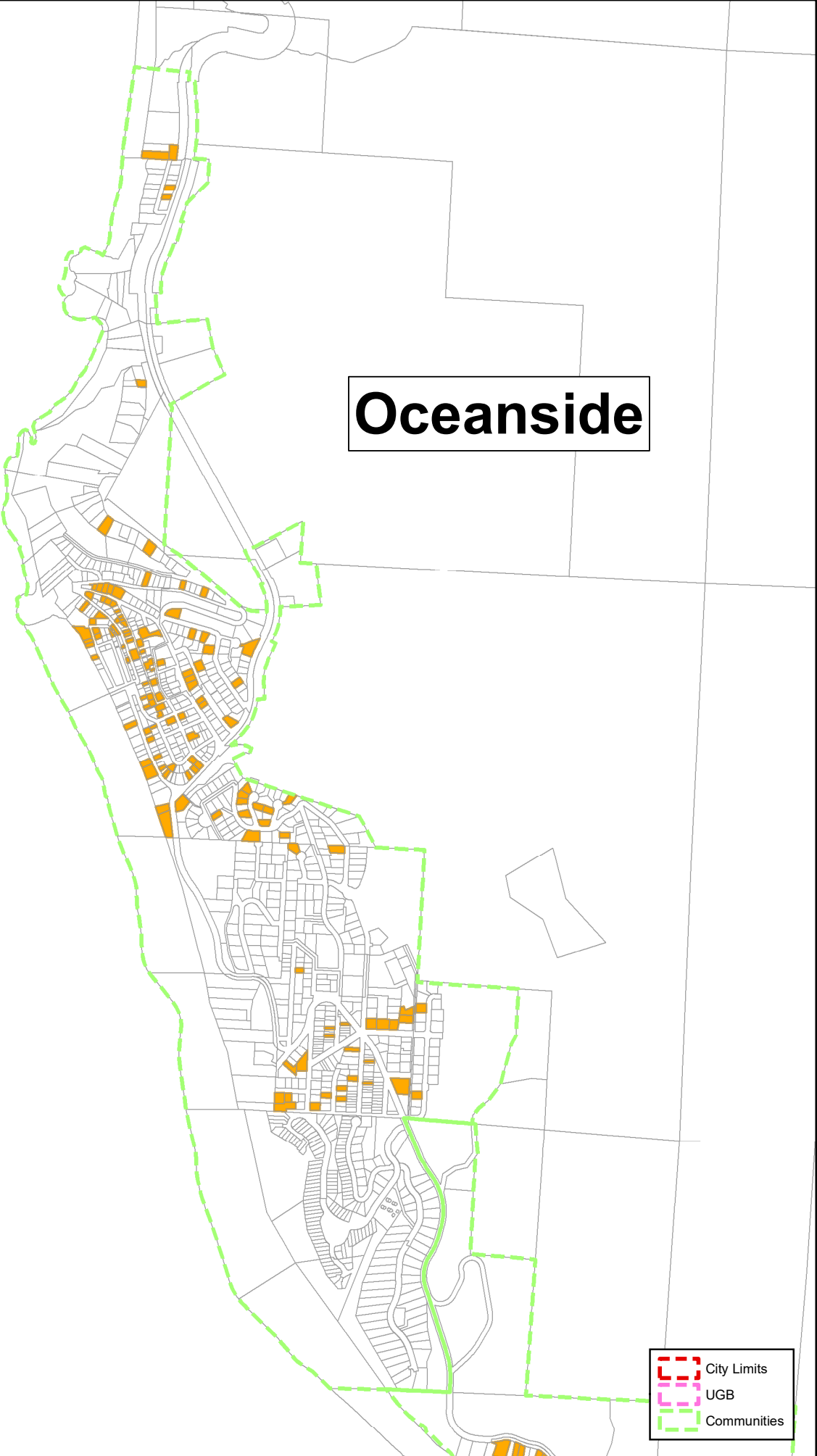
\*Data subject to change. Revised July 19, 2023.

## STR LICENSE PER COMMUNITY

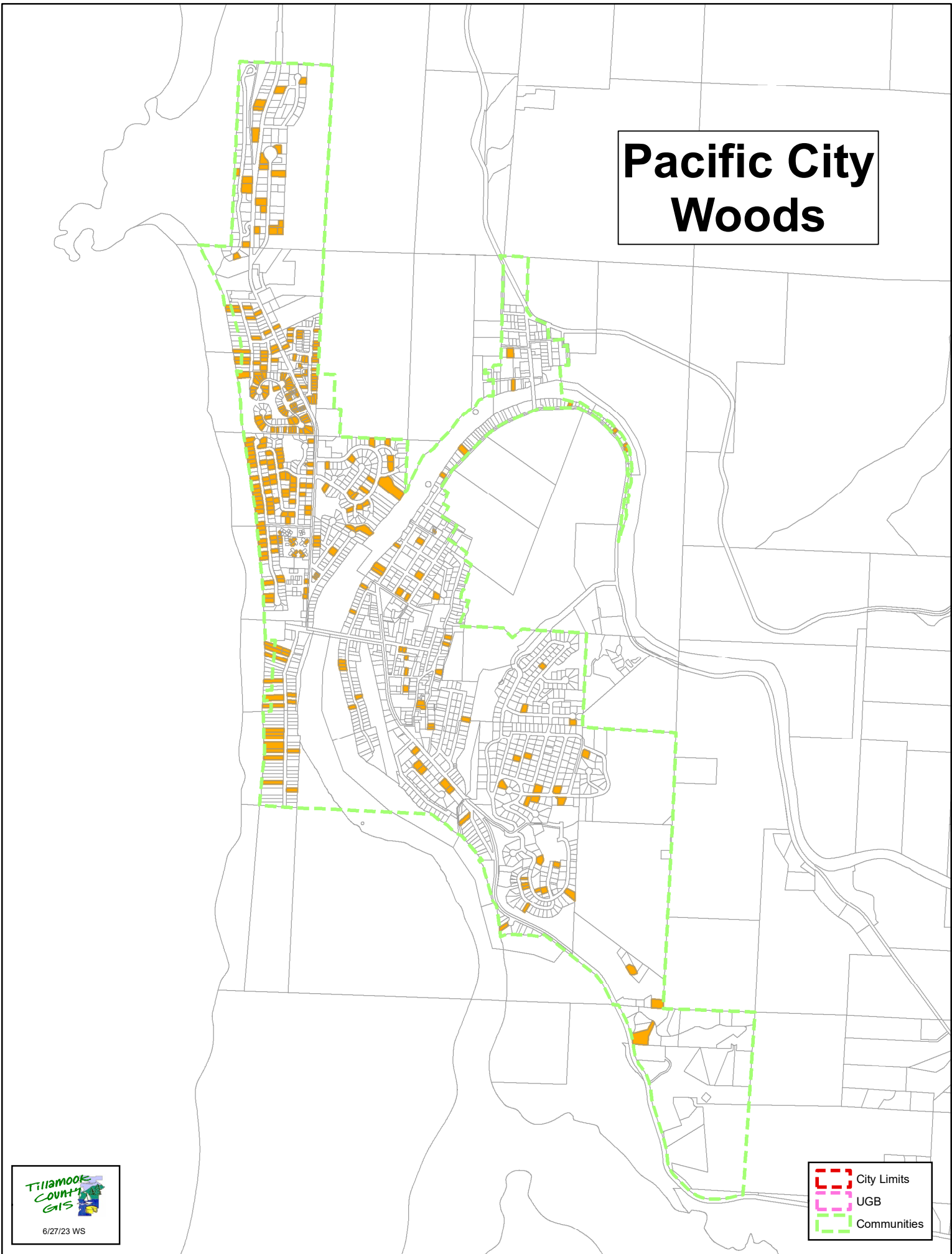
<b>COMMUNITY</b>	<b>STR LICENSE 2018</b>	<b>STR LICENSE 2021</b>	<b>STR LICENSE 2022</b>	<b>STR LICENSE 2023</b>	<b>OCT. 2022 %</b>	<b>JULY 2023 %</b>
<b>NEAHKAHNIE</b>	NA	69	84	82	<b>22%</b>	<b>20%</b>
<b>BARVIEW/TWIN ROCKS/WATSECO</b>	NA	37	39	41	<b>15%</b>	<b>15%</b>
<b>CAPE MEARES</b>	NA	27	34	31	<b>15%</b>	<b>13%</b>
<b>OCEANSIDE</b>	95	109	132	129	<b>19%</b>	<b>19%</b>
<b>NETARTS</b>	65	75	103	102	<b>14%</b>	<b>13%</b>
<b>TIERRA DEL MAR</b>	NA	NA	53	51	<b>23%</b>	<b>22%</b>
<b>PACIFIC CITY/WOODS</b>	226	278	328	317	<b>24%</b>	<b>23%</b>
<b>NESKOWIN</b>	103	138	184	179	<b>20%</b>	<b>20%</b>

\*Not Attained (NA). Data collection did not take place in specified communities during those years.

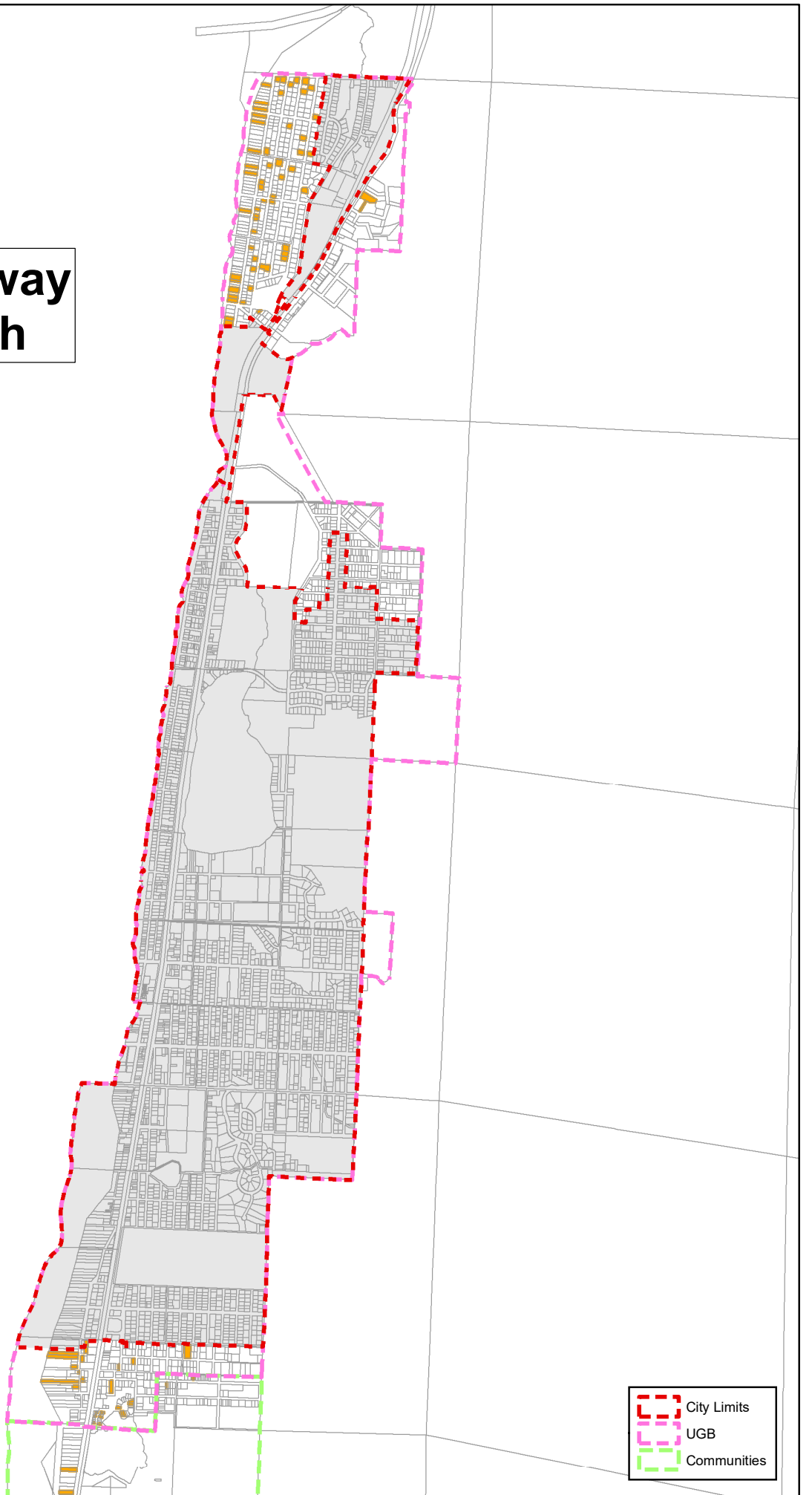
# Oceanside



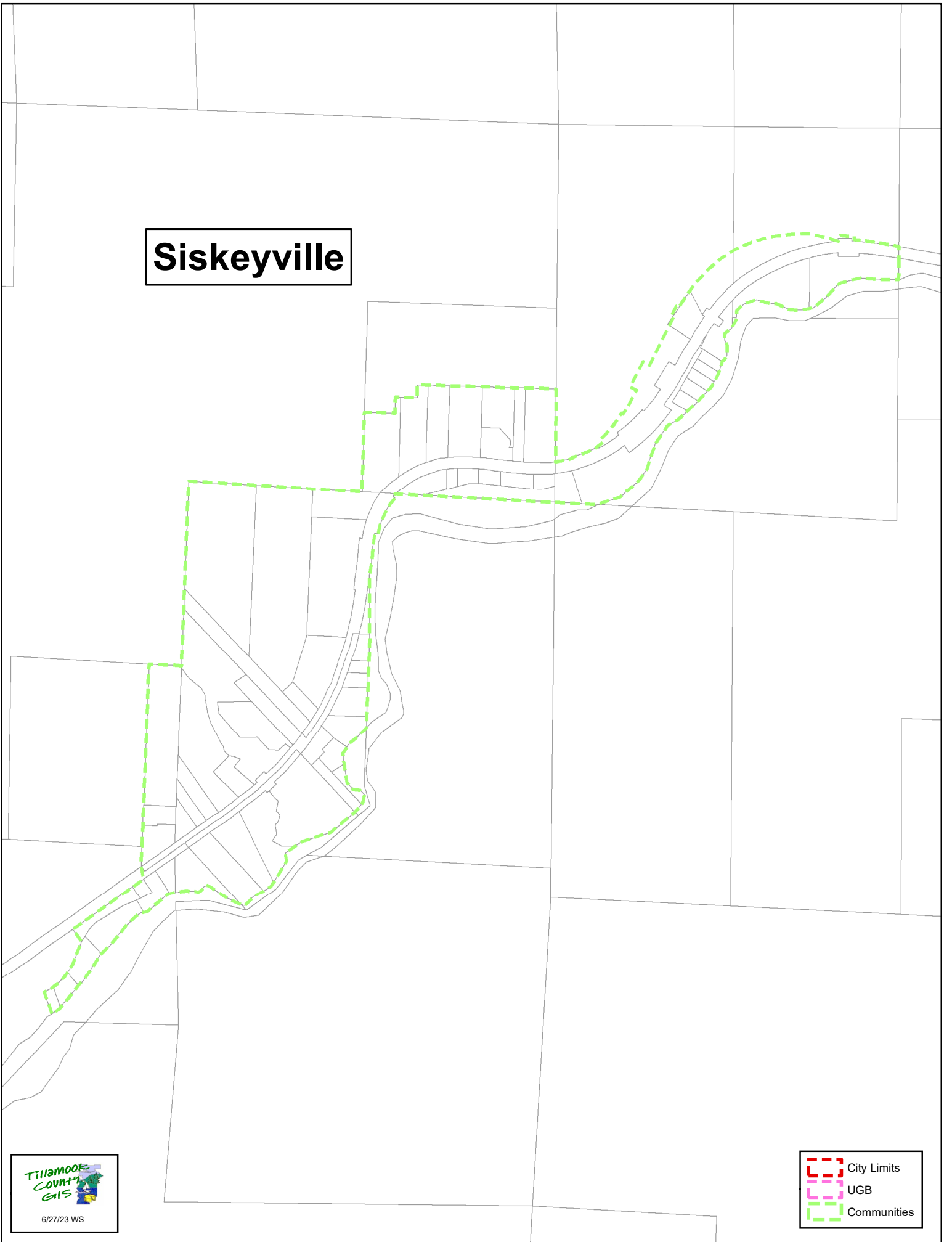
# Pacific City Woods

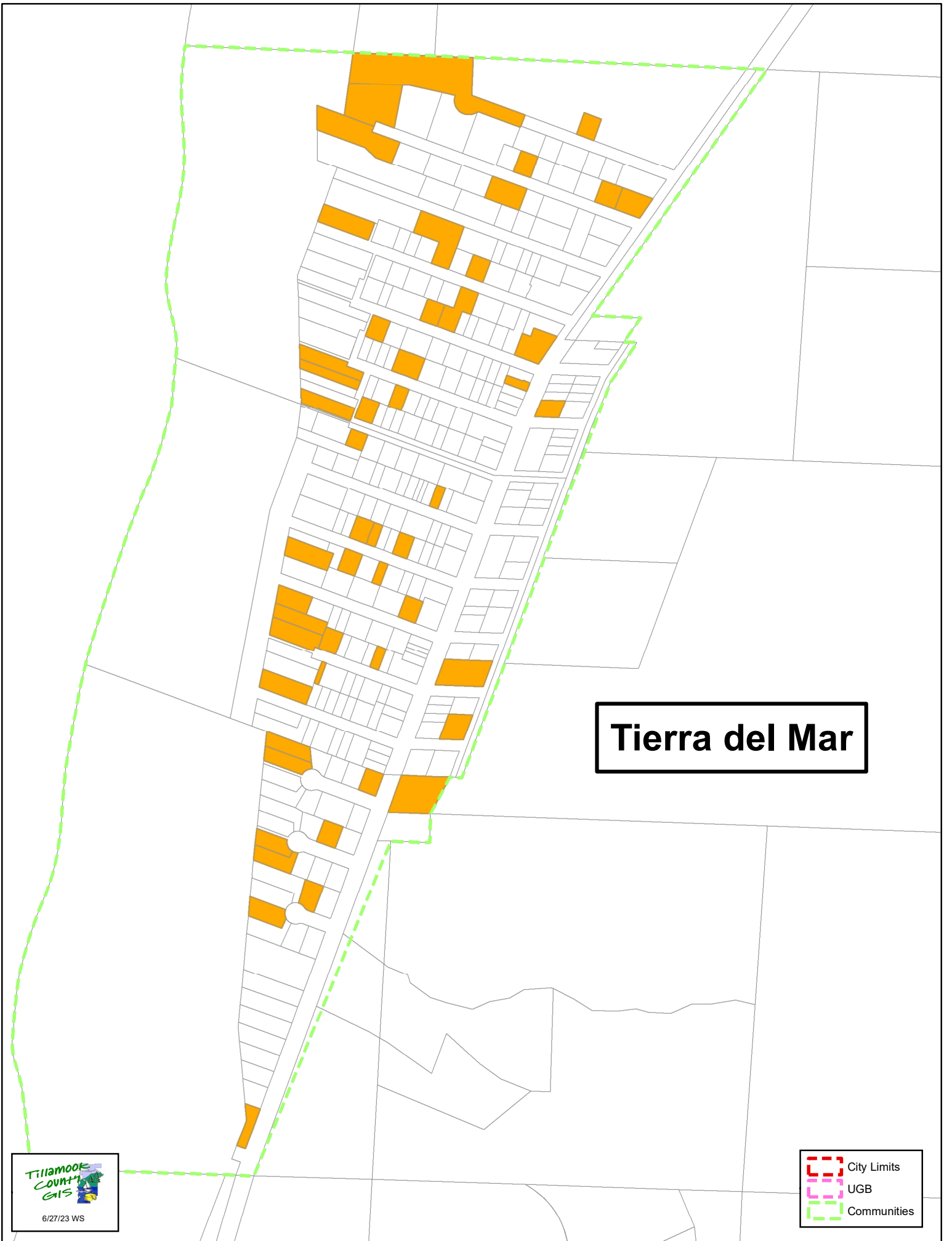


# Rockaway Beach



# Siskeyville

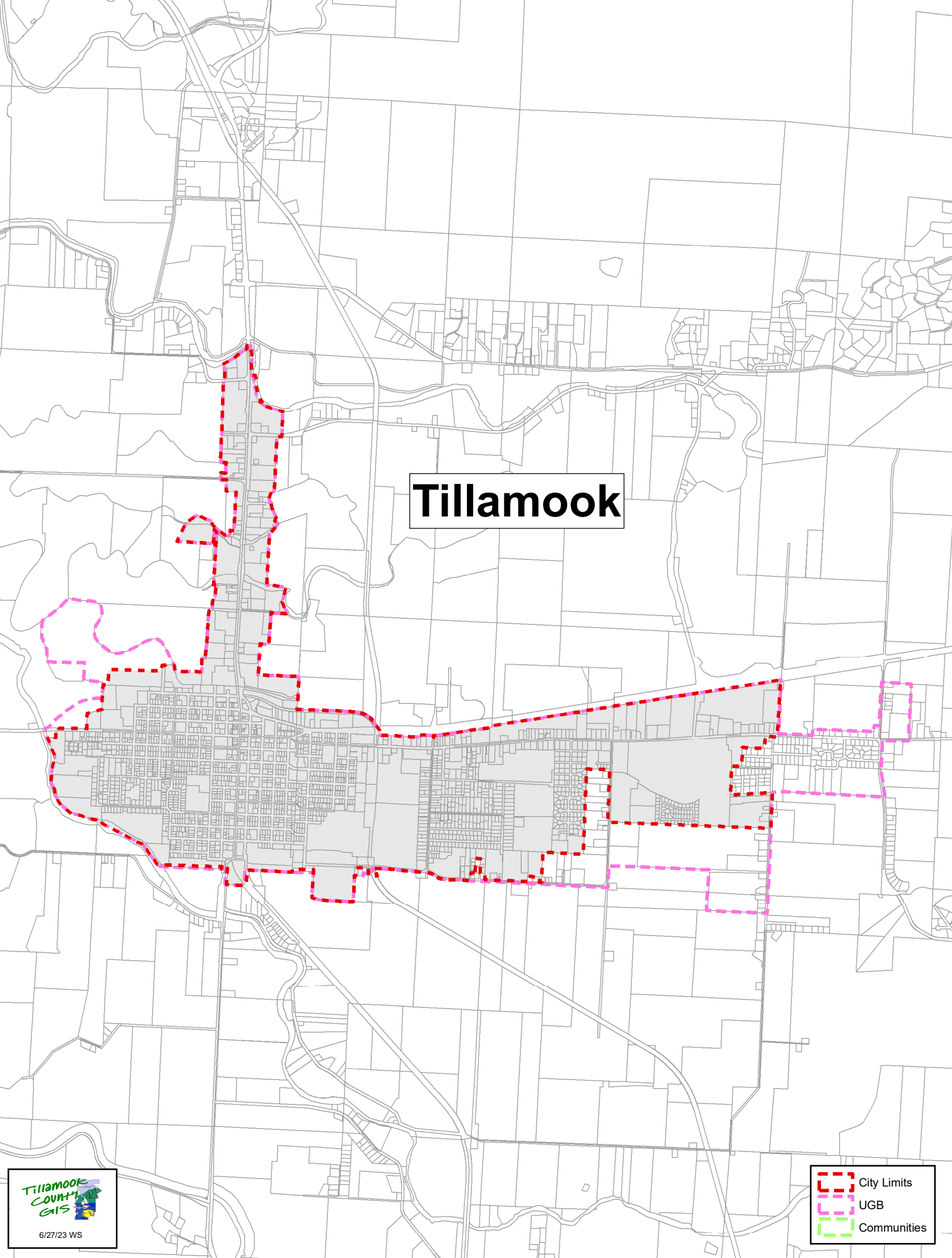




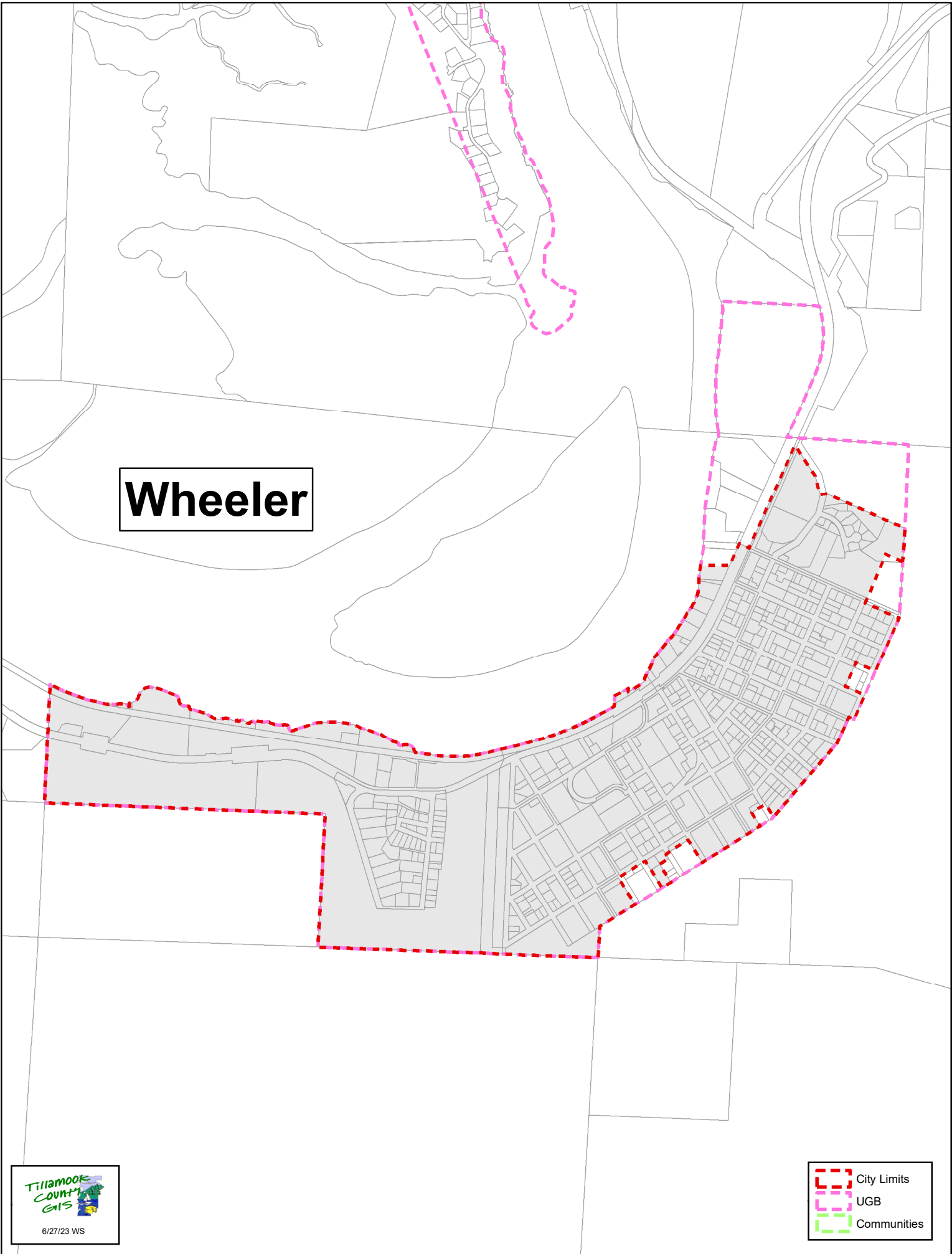
**Tierra del Mar**



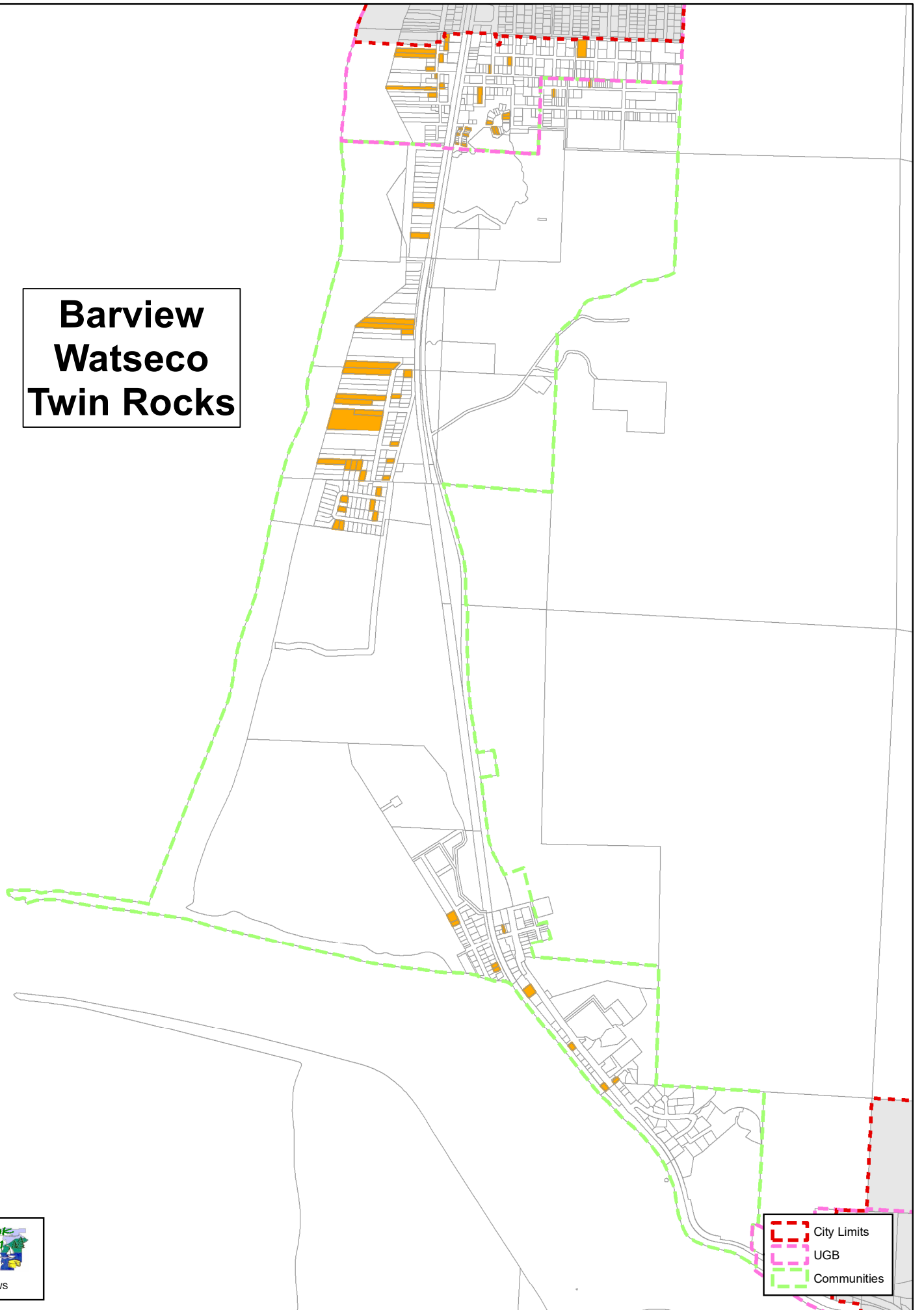
# Tillamook



# Wheeler

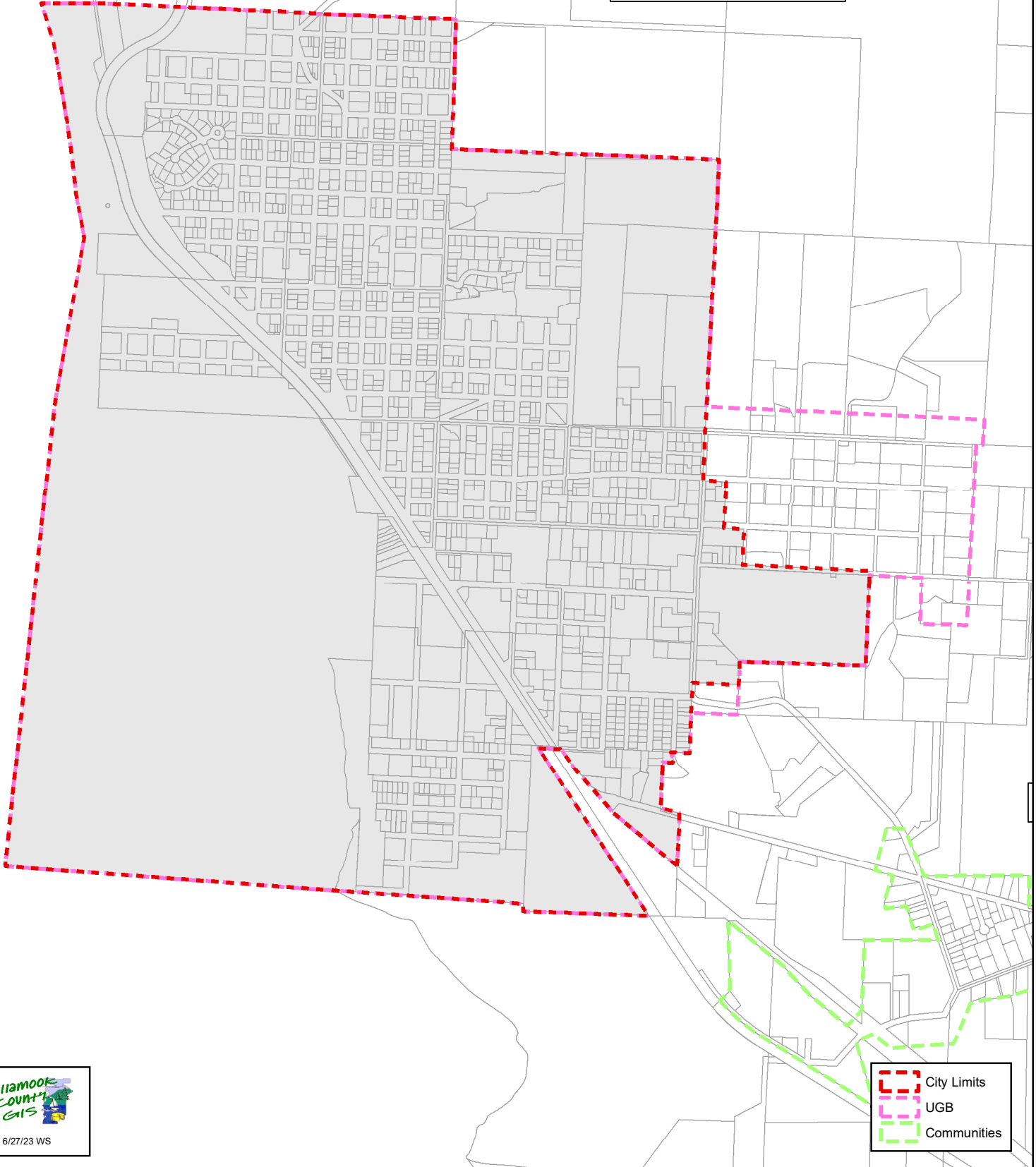


**Barview  
Watseco  
Twin Rocks**

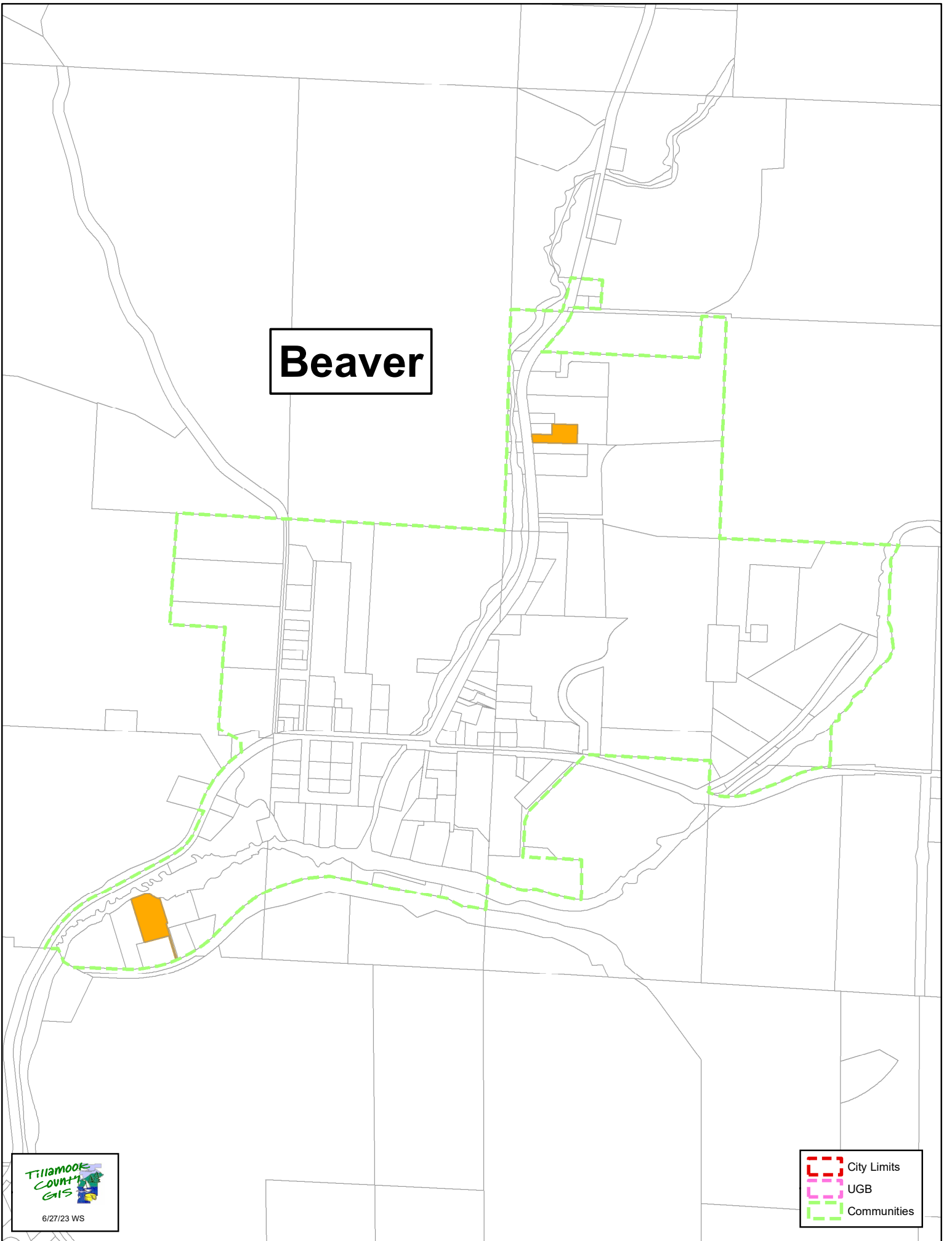


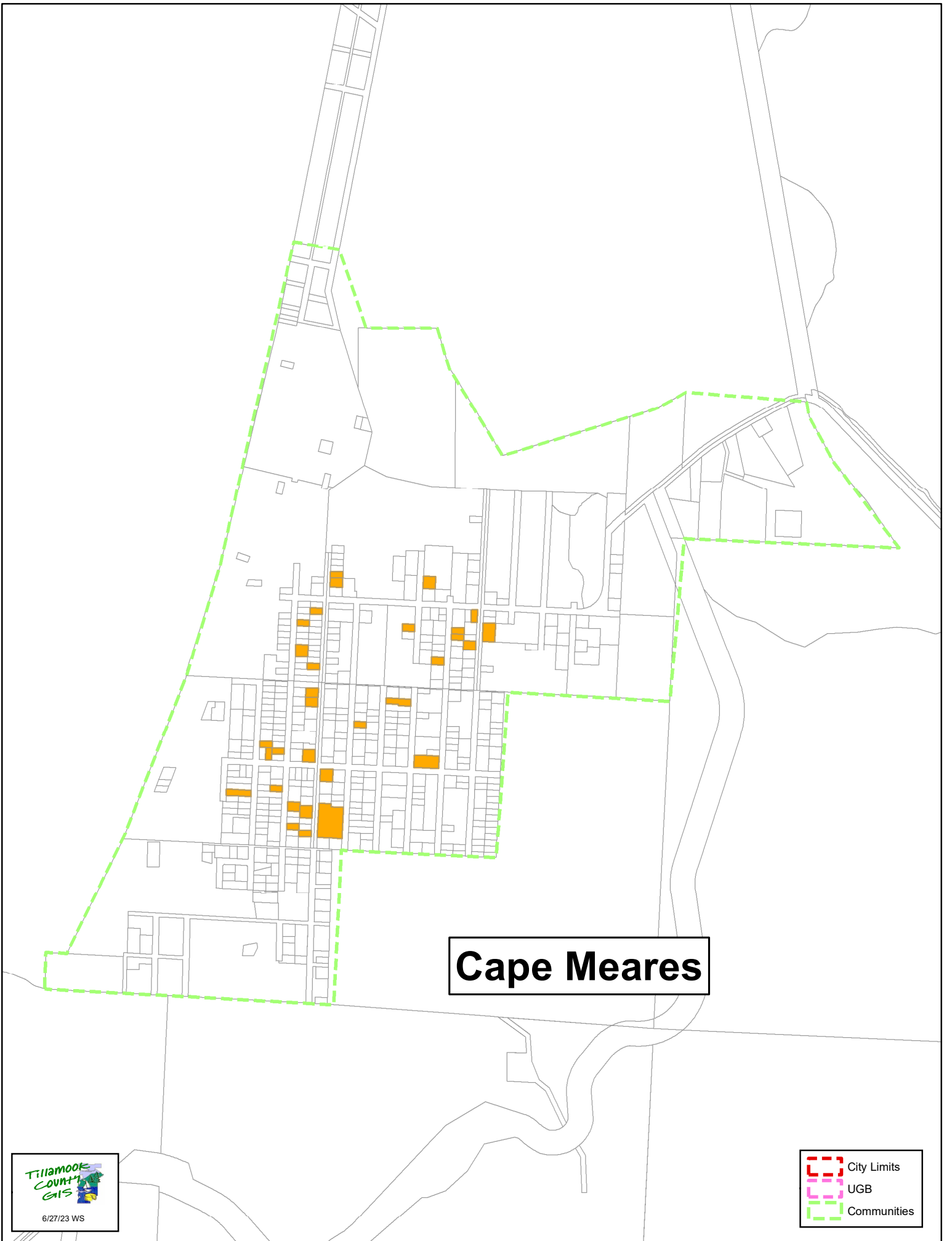
- City Limits
- UGB
- Communities

# Bay City



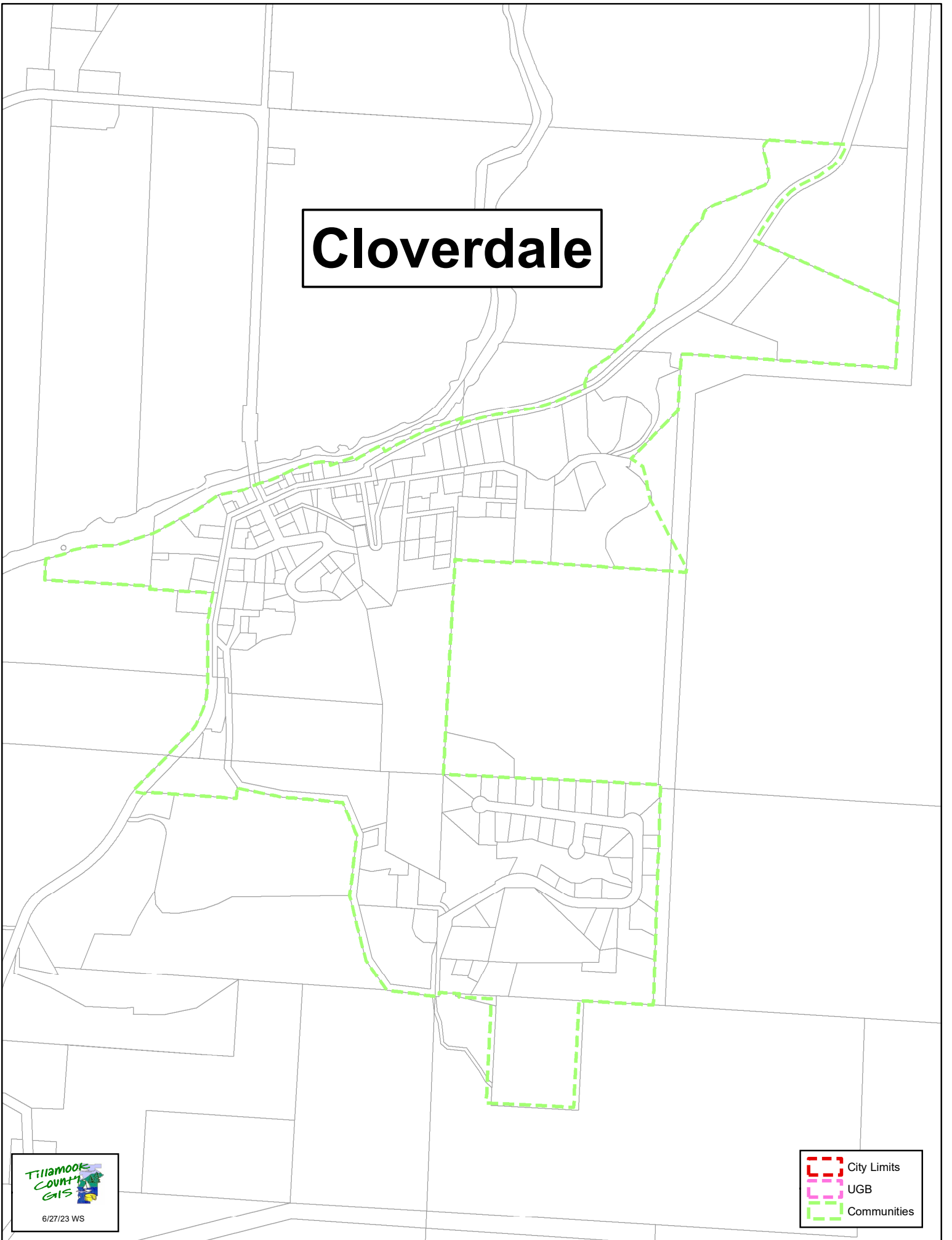
# Beaver



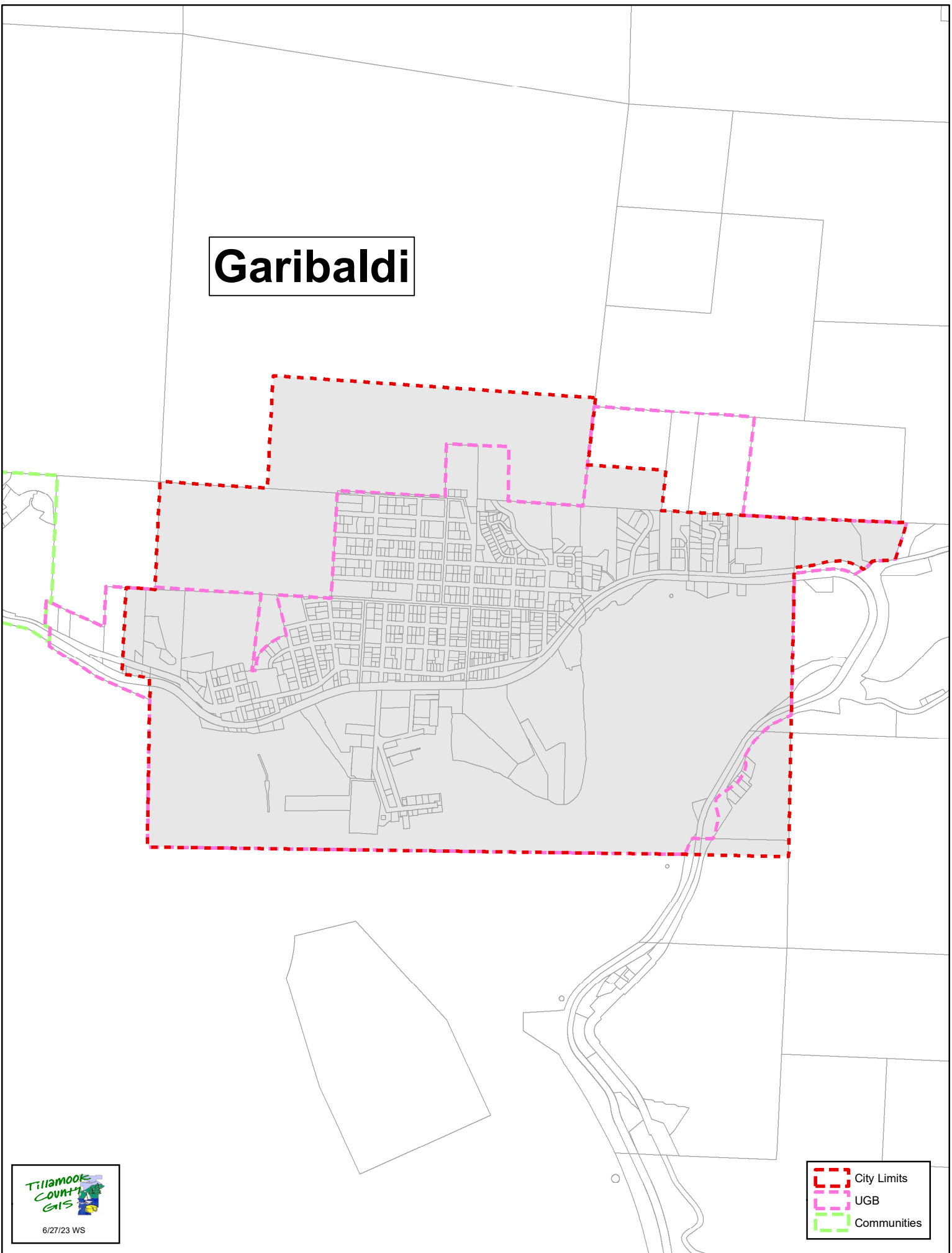


# Cape Meares

# Cloverdale

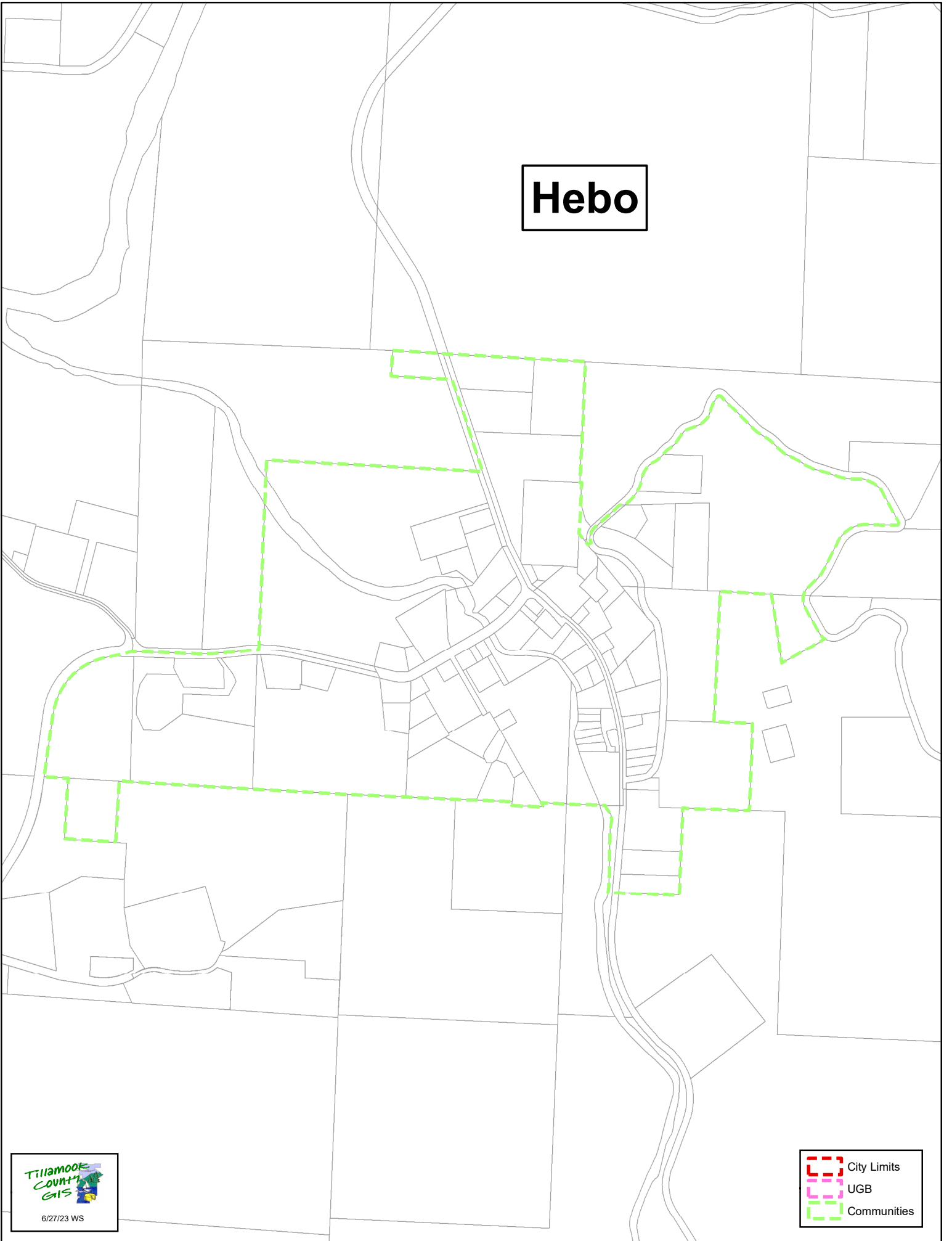


# Garibaldi

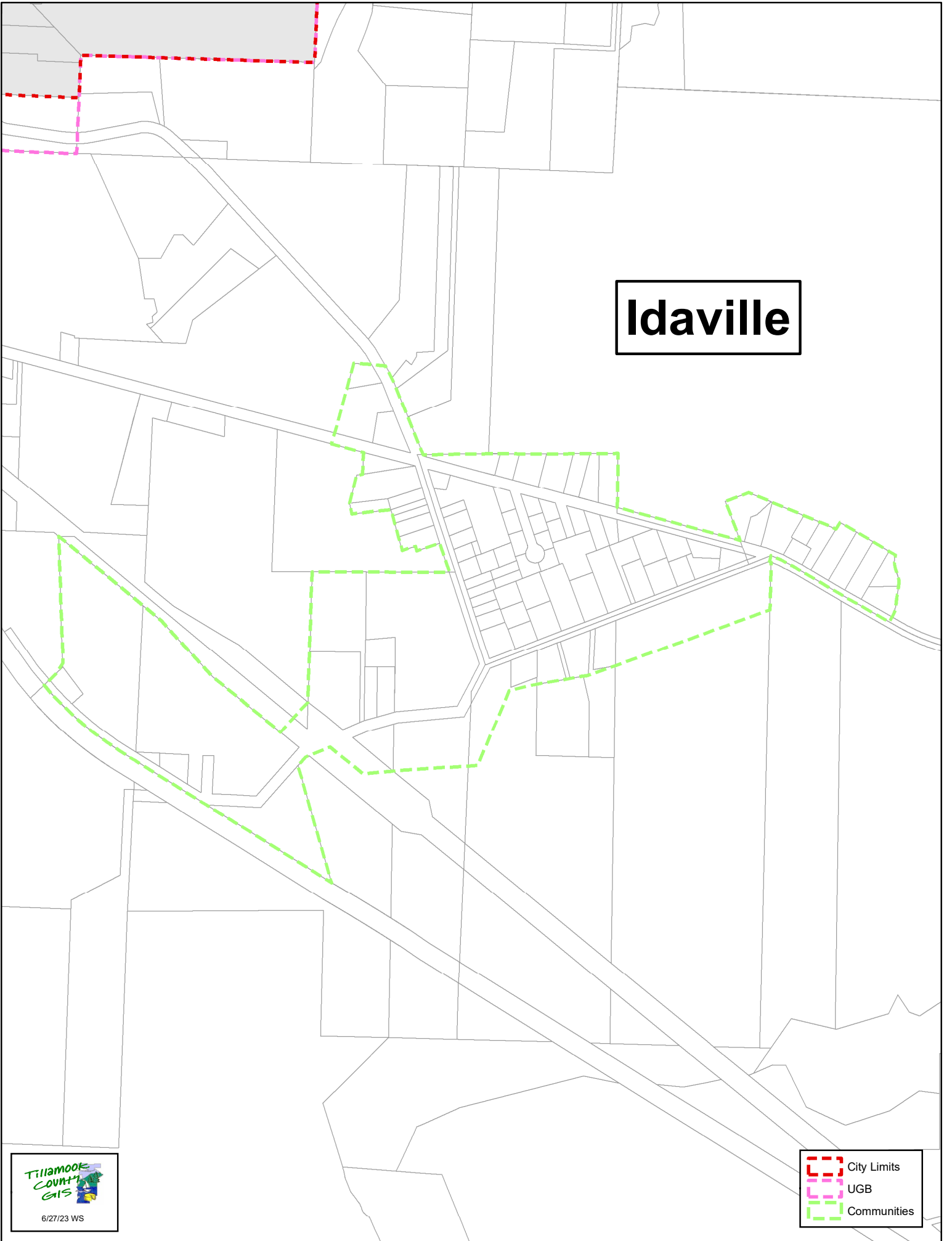


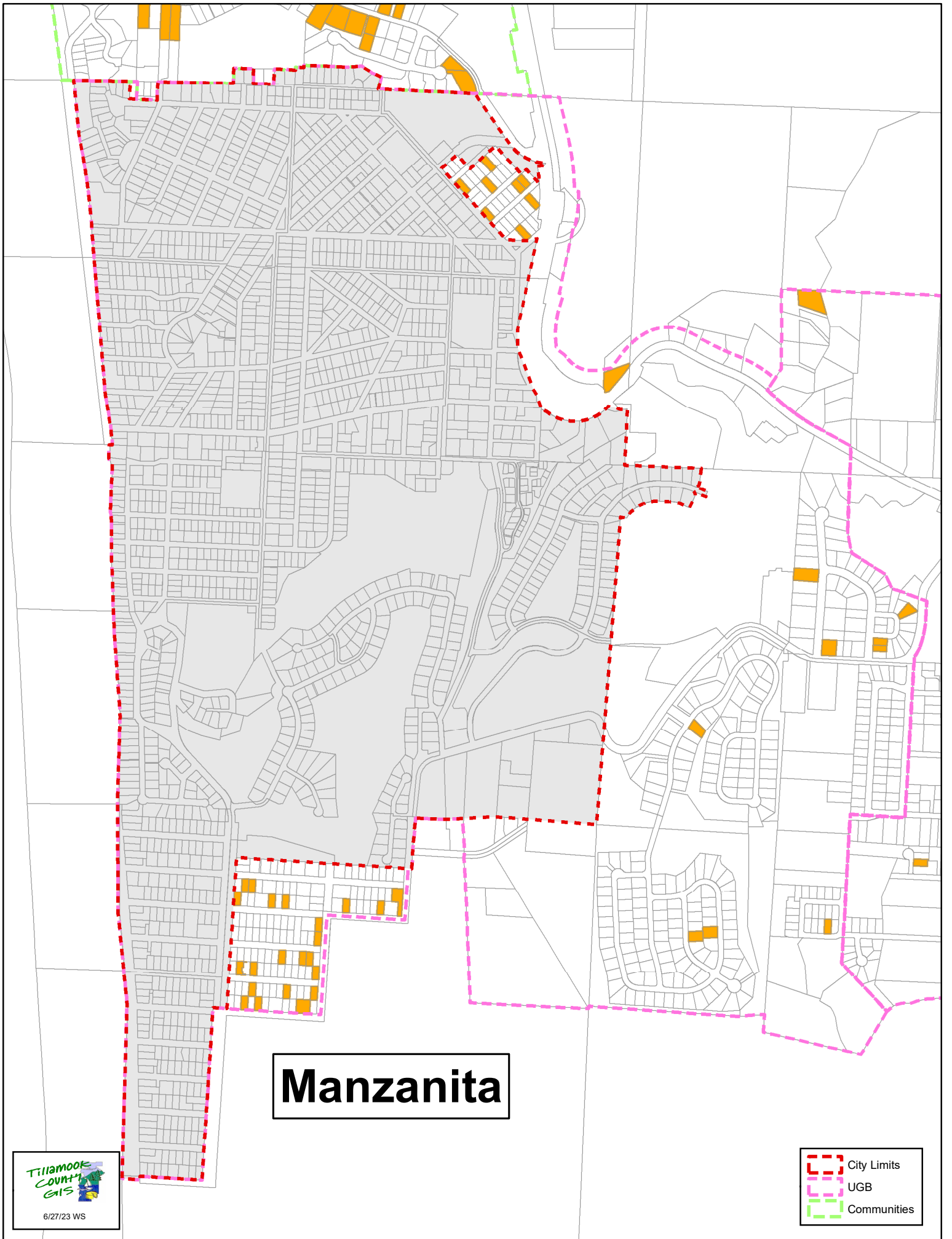


# Hebo



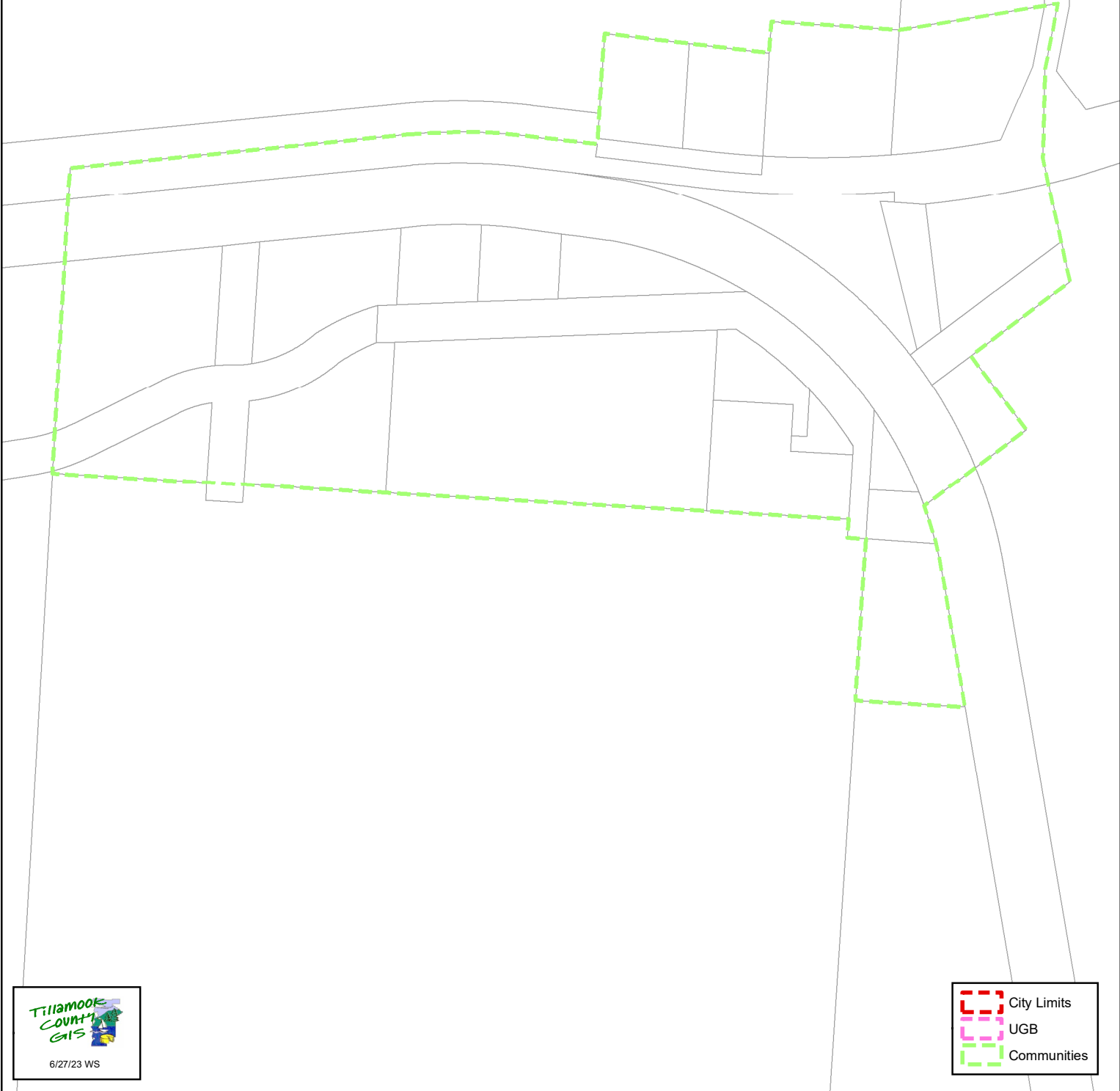
# Idaville



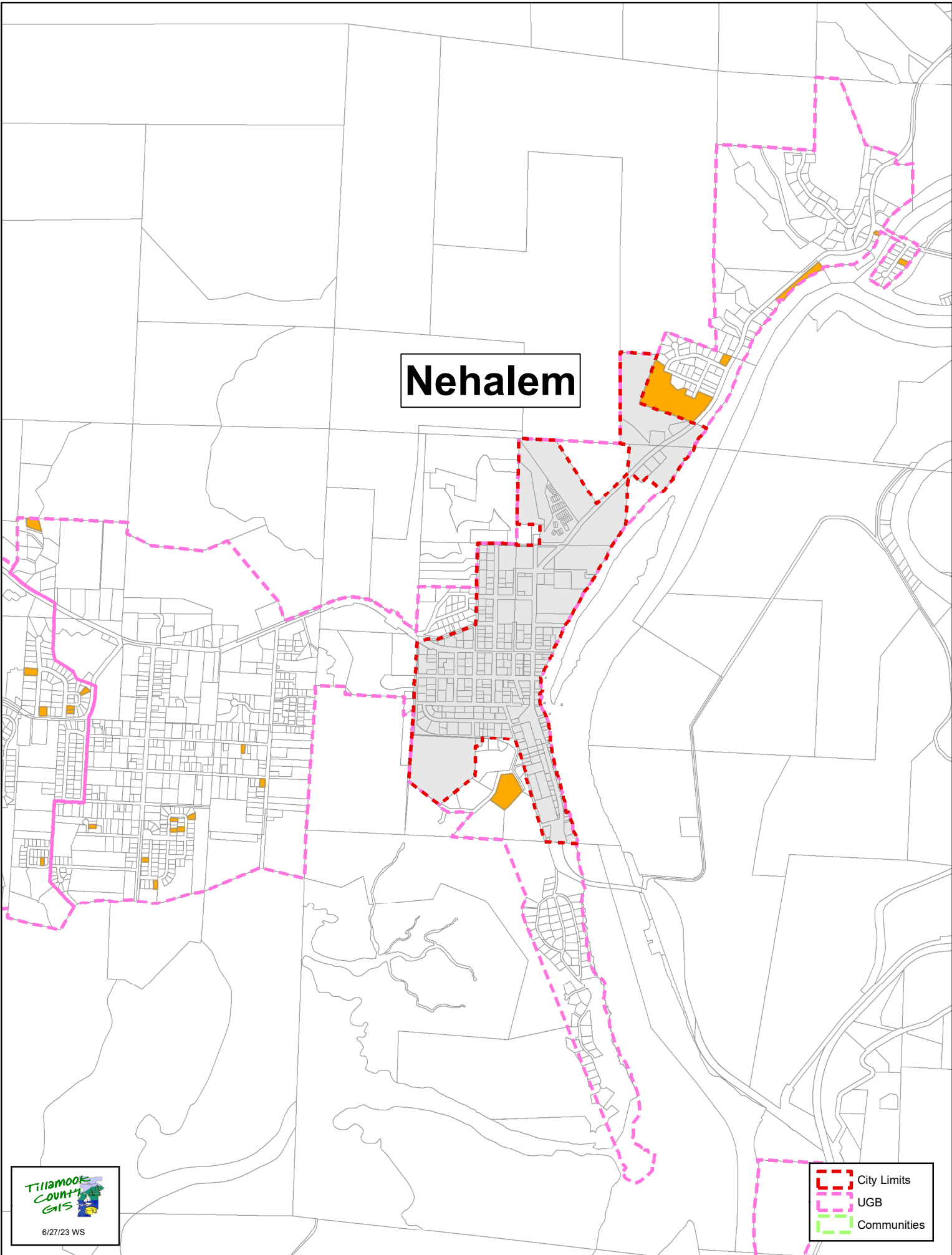


# Manzanita

# Mohler

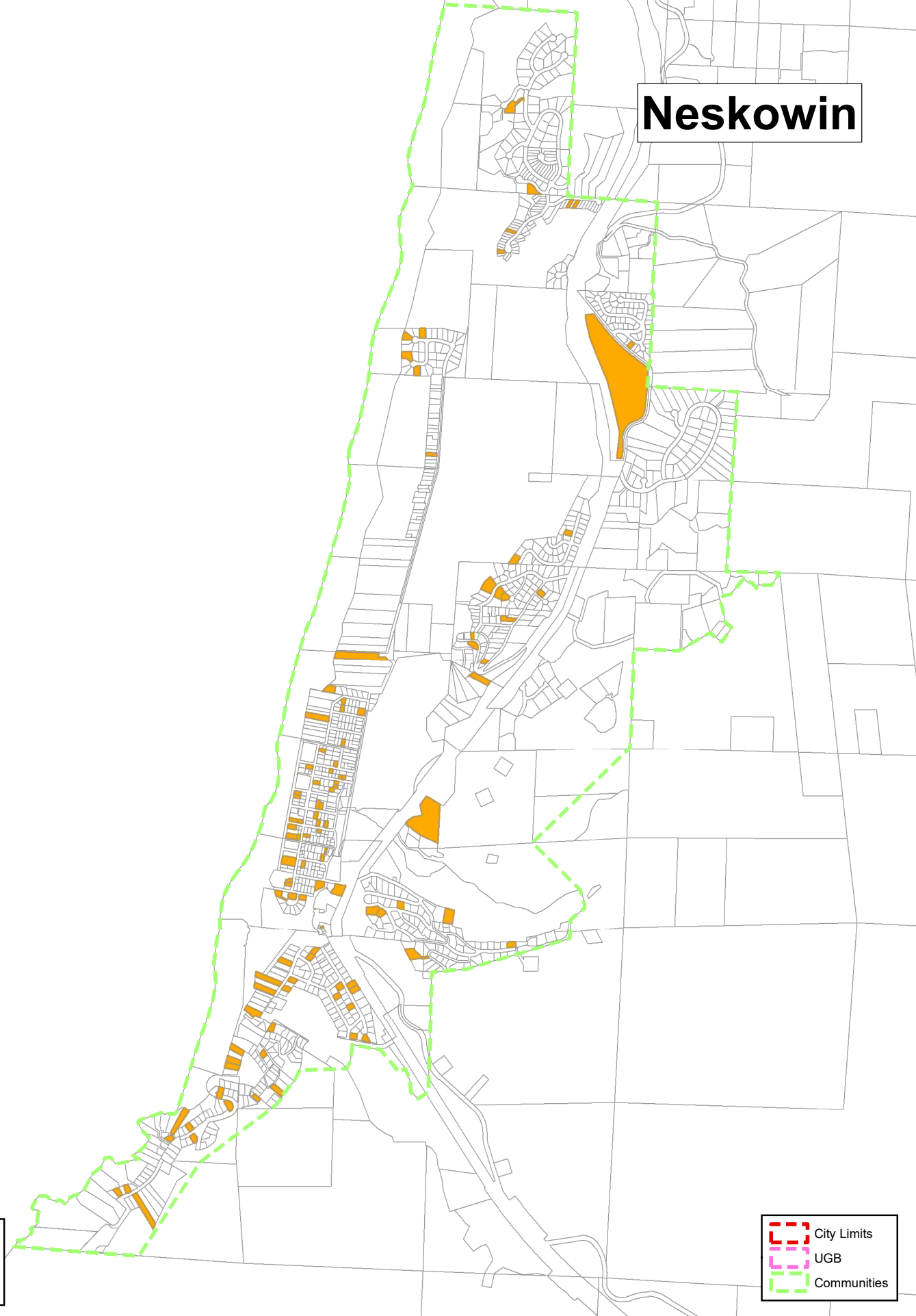


# Nehalem

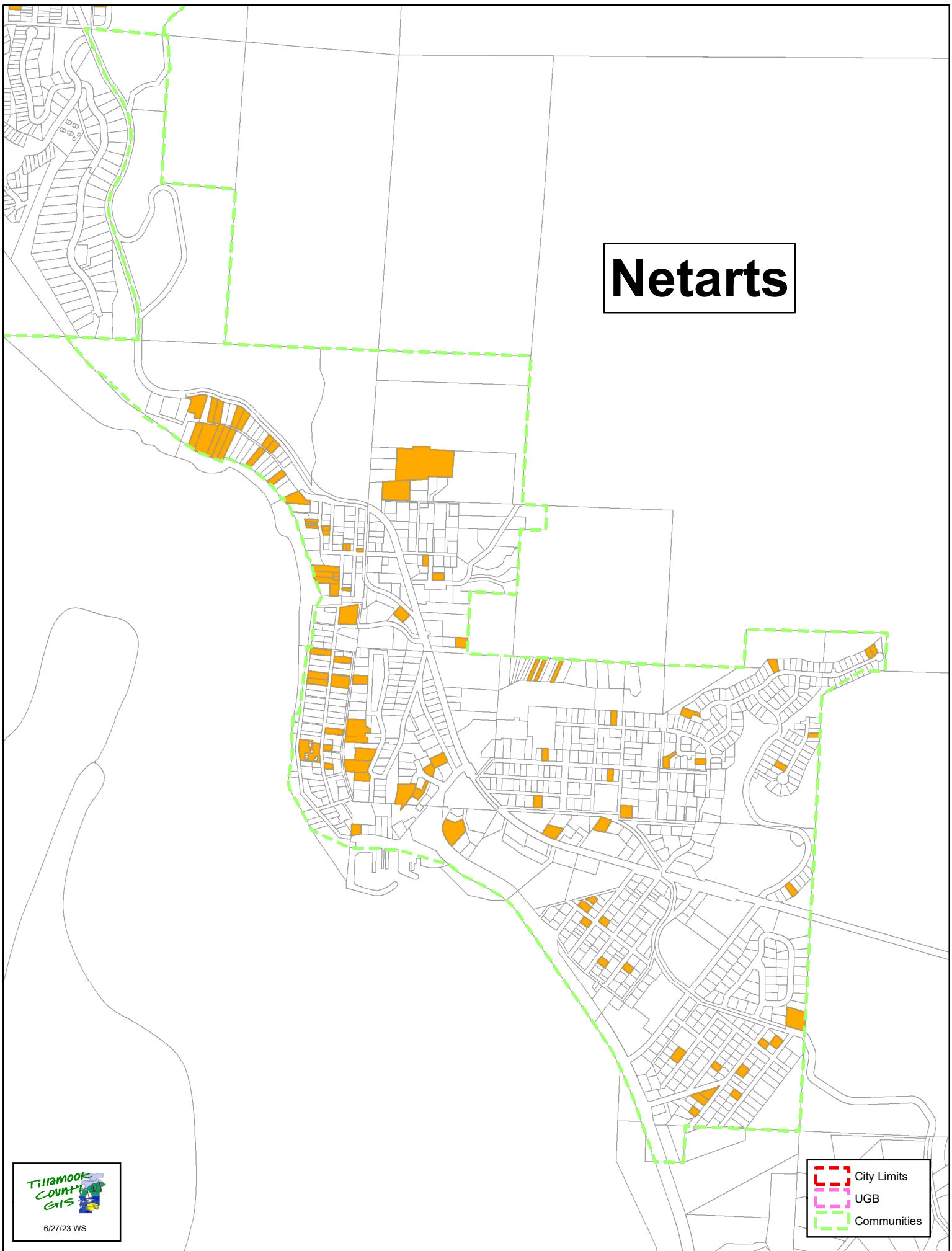


- City Limits
- UGB
- Communities

# Neskowin



# Netarts





# NeahKahNie

