



Source: FHWA

October 7, 2022

## Cape Meares Road Relocation

### Construction Activities & Upcoming Work

MSE wall installation, Soldier pile wall installation, culvert installation, turf establishment, and brush removal will continue next week. Geofam wall installation will start next week. Heavy equipment is working throughout the project. There is no public access within project limits, which includes no pedestrian or bike access. The fixed construction completion date is October 31, 2023.

#### ROAD CLOSURES

Current road closure points will remain in effect on Bayocean Road near the Cape Meares Lighthouse, and approximately 0.5 miles south of the Lighthouse. Construction will have minimal impact on public traffic as it is closed to through traffic. Please be advised that project limits are outside the gate on Cape Meares Loop coming south from Bayocean Road. A reader board and Type III Barricades have been installed at this location. See map on the following page for areas not accessible to the public due to ongoing construction.

Project Website:

<https://highways.dot.gov/federal-lands/projects/or/tillamook-b780-1>



Soldier pile wall progress

Project Number:  
OR TILLAMOOK B780  
(1)

FHWA Contact:  
John Henderson  
john.henderson@dot.gov  
360-839-3867

Project Partner:  
Tillamook County  
Federal Highway  
Administration  
Western Federal Lands  
Highway Division

Contractor:  
M.A. DeAtley Construction, Inc.  
829 Evans Rd,  
Clarkston, WA 99403

Notice to Proceed:  
December 6, 2021.

Fixed Completion Date:  
October 31, 2023



U.S. Department  
of Transportation

**Federal Highway  
Administration**

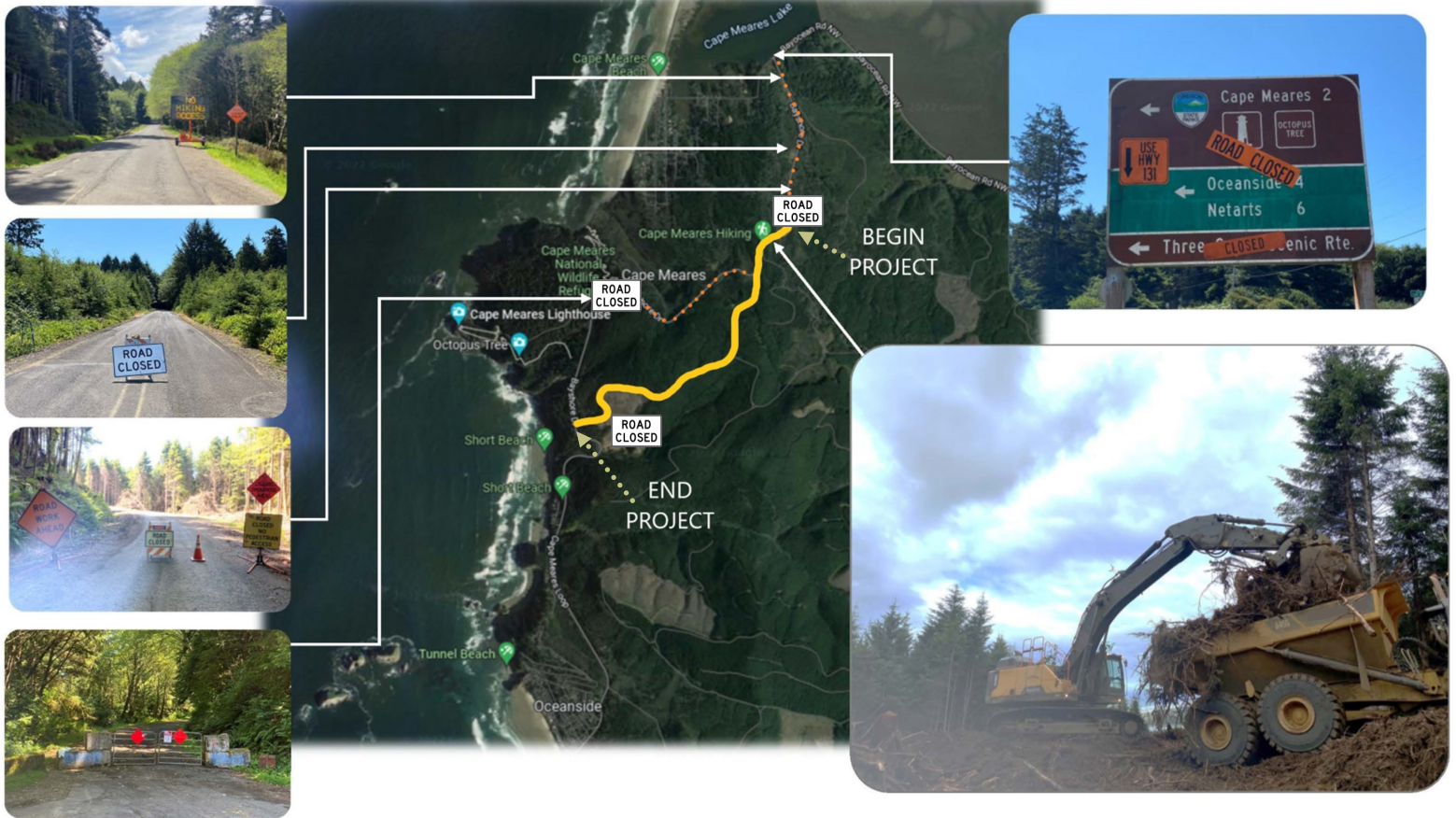
**Western Federal Lands Highway Division**

Source: FHWA



# OR TILLAMOOK B780(1), Cape Meares Road Relocation

## Map



Map Source: Google

All project images  
Source: FHWA

**Project location and areas closed off to the public.**



# OR TILLAMOOK B780(1), Cape Meares Road Relocation

## Pictures



**Installing culverts  
to ensure proper  
roadway drainage**

Source: FHWA

**Geofoam fill material  
for the first row of the  
Geofoam Wall**



Source: FHWA