

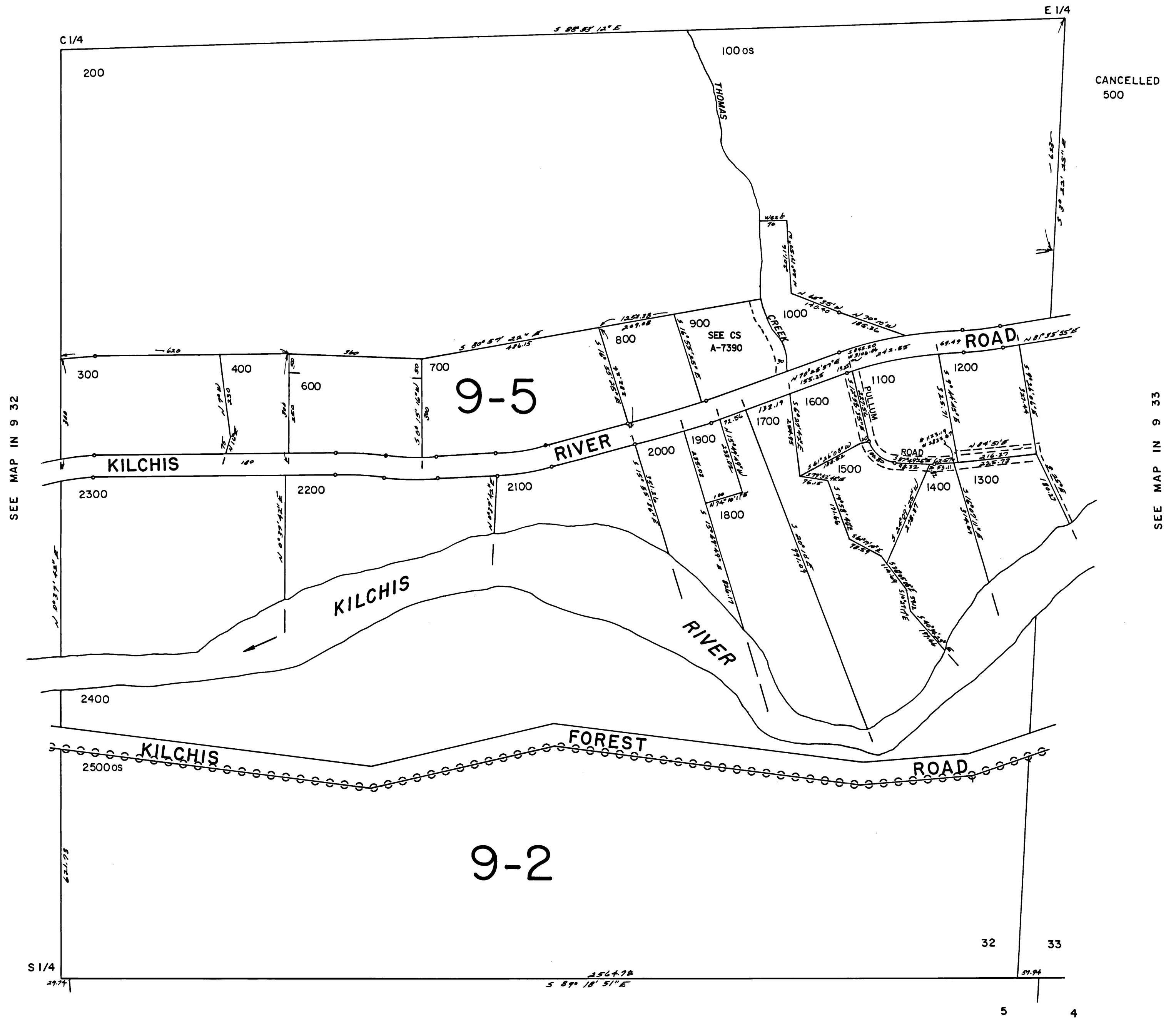
THIS MAP WAS PREPARED FOR  
ASSESSMENT PURPOSE ONLY

SE1/4 SEC. 32 T.1N. R.9W. W.M.  
TILLAMOOK COUNTY

IN 9 32D

1" = 200'

SEE MAP IN 9 32



SEE MAP IN 9 32

SEE MAP IN 9 33

SEE MAP IS 9

REVISED 3-1-99, BPH

IN 9 32D