

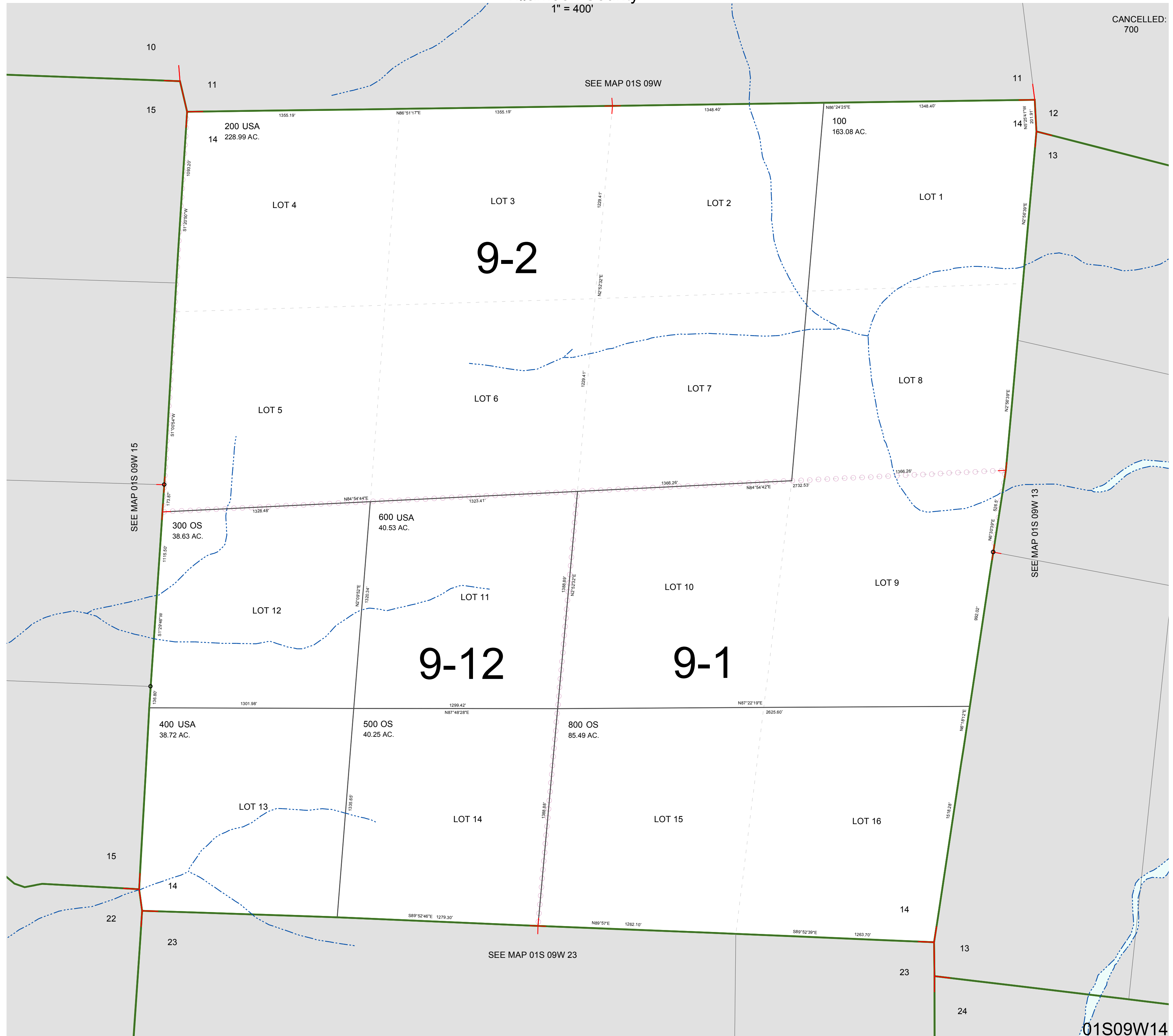
FOR ASSESSMENT AND TAXATION ONLY, NOT SUITABLE FOR LEGAL, ENGINEERING, OR SURVEY PURPOSES

SECTION 14 T.1S. R.9W. W.M.
Tillamook County

1" = 400'

01S09W14

CANCELLED:
700



01S09W14

REVISED 2/18/16, WS