

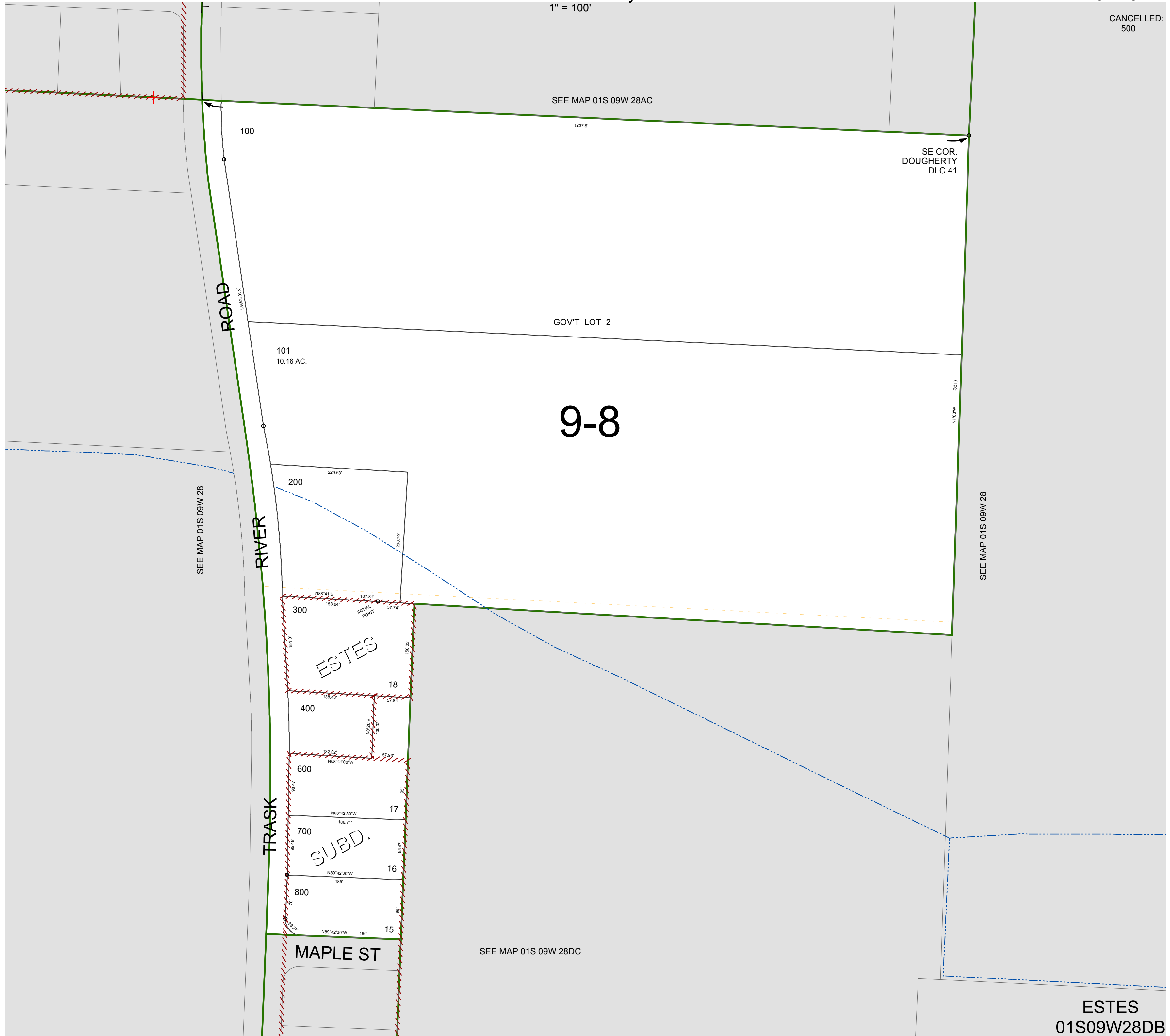
FOR ASSESSMENT AND TAXATION ONLY. NOT SUITABLE FOR LEGAL, ENGINEERING, OR SURVEY PURPOSES

N.W.1/4 S.E.1/4 SEC.28 T.1S. R.9W. W.M.
Tillamook County

1" = 100'

01S09W28DB
ESTES

CANCELLED:
500



ESTES
01S09W28DB
REVISED 2/18/16, WS