

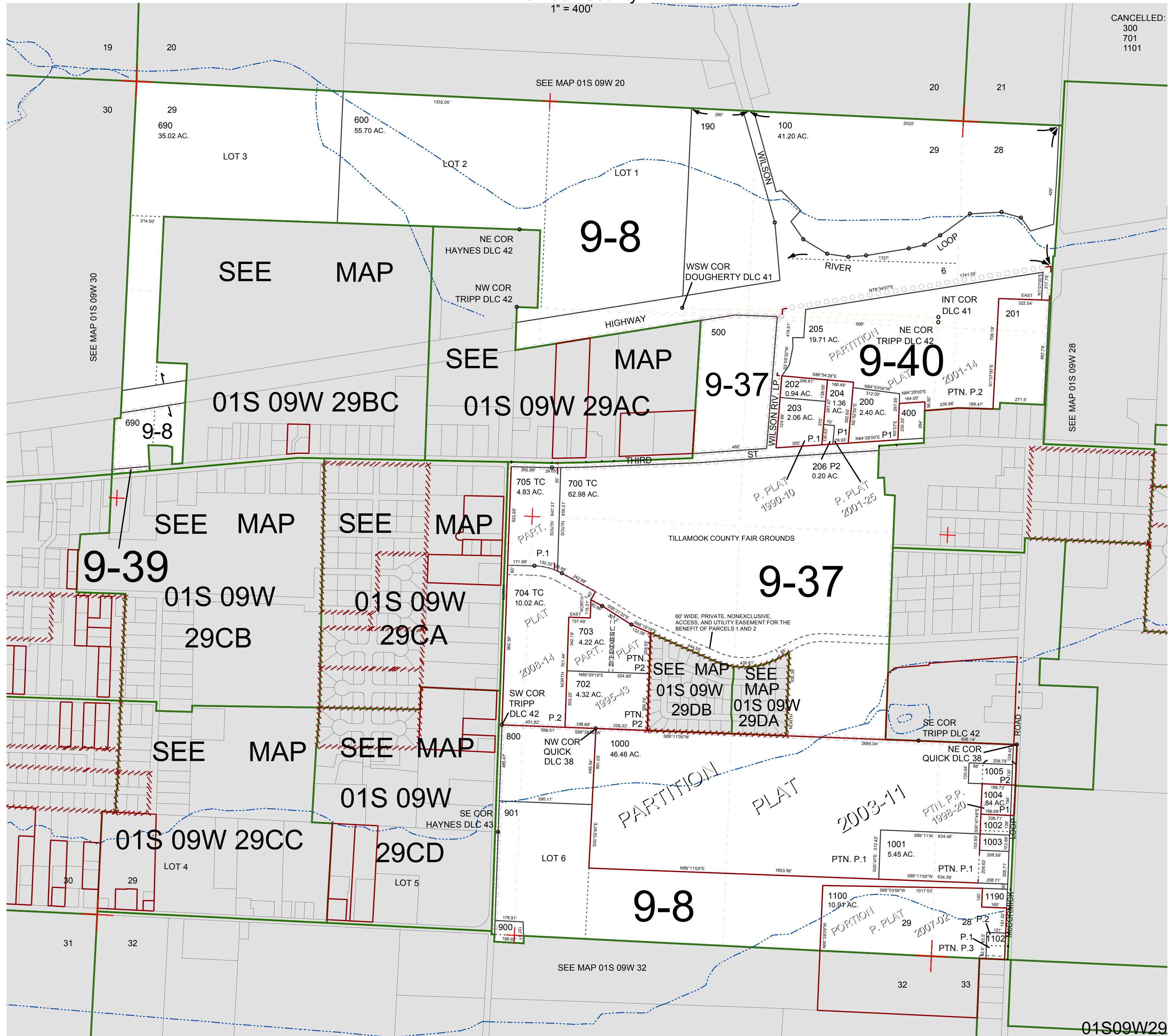
FOR ASSESSMENT AND TAXATION ONLY, NOT SUITABLE FOR LEGAL, ENGINEERING, OR SURVEY PURPOSES

SECTION 29 T.1S. R.9W. W.M.
Tillamook County

1" = 400'

01S09W29

CANCELLED:
300
701
1101



01S09W29

REVISED 12/29/17, WS