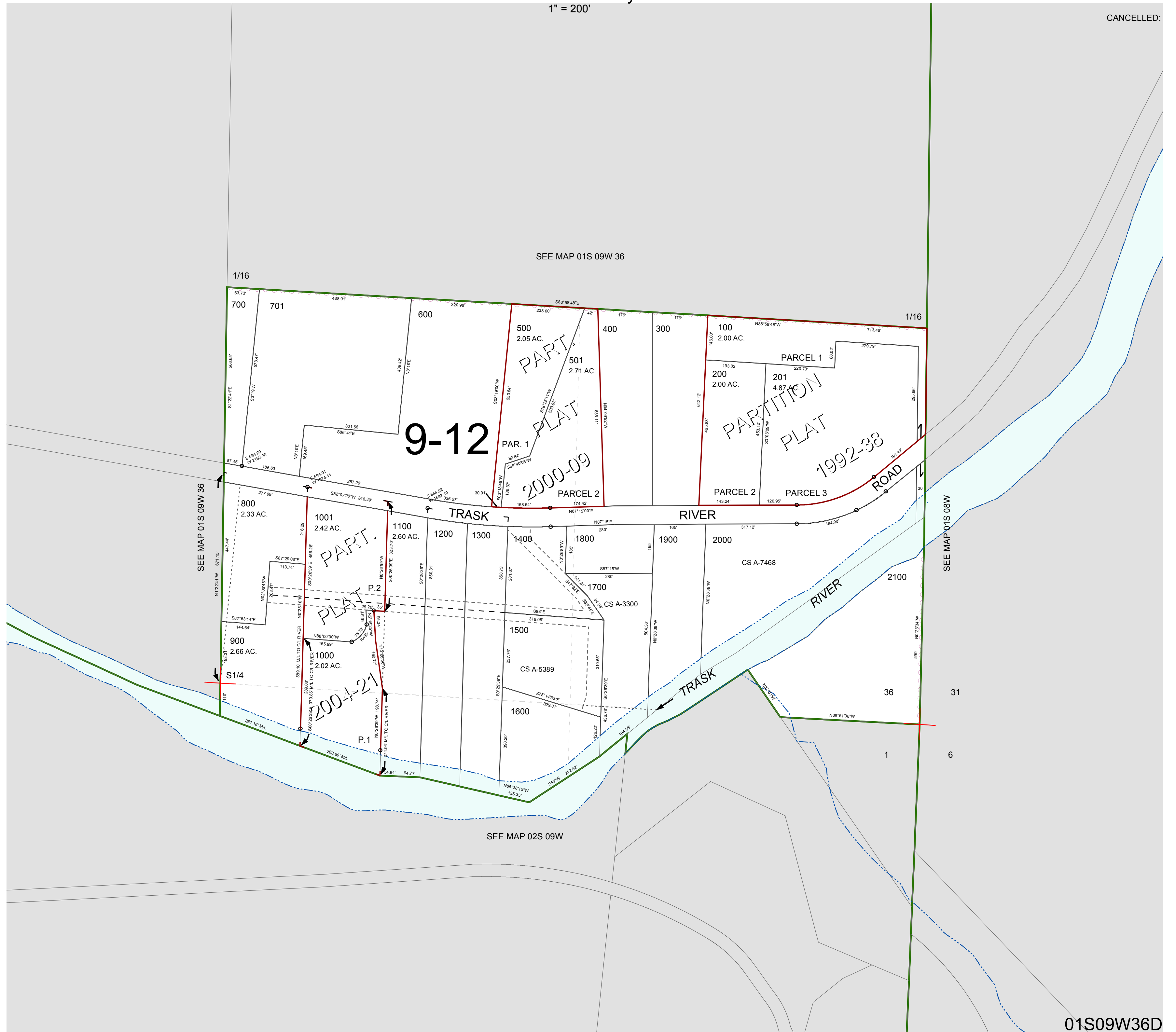


FOR ASSESSMENT AND TAXATION ONLY, NOT SUITABLE FOR  
LEGAL, ENGINEERING, OR SURVEY PURPOSES

S.E.1/4 SEC.36 T.1S. R.9W. W.M.  
Tillamook County  
1" = 200'

01S09W36D

CANCELLED:



01S09W36D  
REVISED 2/18/16, WS