

THIS MAP WAS PREPARED FOR
ASSESSMENT PURPOSE ONLY

NW1/4 NW1/4 SEC.30 T.4S. R.10W. W.M.
TILLAMOOK COUNTY

1" = 100'

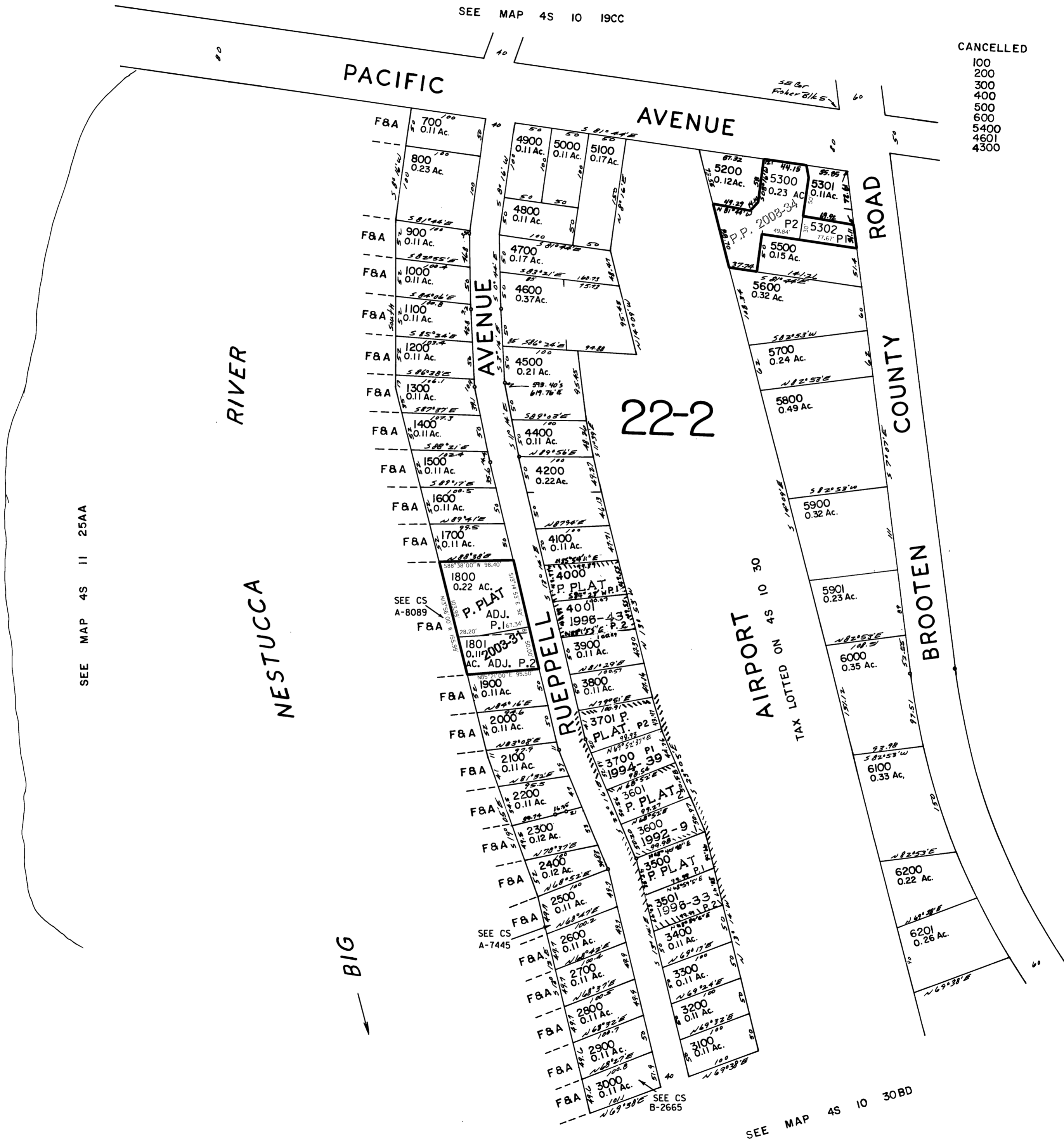
4S 10 30BB
PACIFIC CITY

24 19
25 30

SEE MAP 4S 10 19CC

CANCELLED

- 100
- 200
- 300
- 400
- 500
- 600
- 5400
- 4601
- 4300



4S 10 30BB
PACIFIC CITY

REVISED 11/05/08, WS