

THIS MAP WAS PREPARED FOR
ASSESSMENT PURPOSE ONLY

SE1/4 NE1/4 SEC. 25 T.4S. R.11W. W.M.
TILLAMOOK COUNTY

4S II 25AD
PACIFIC CITY

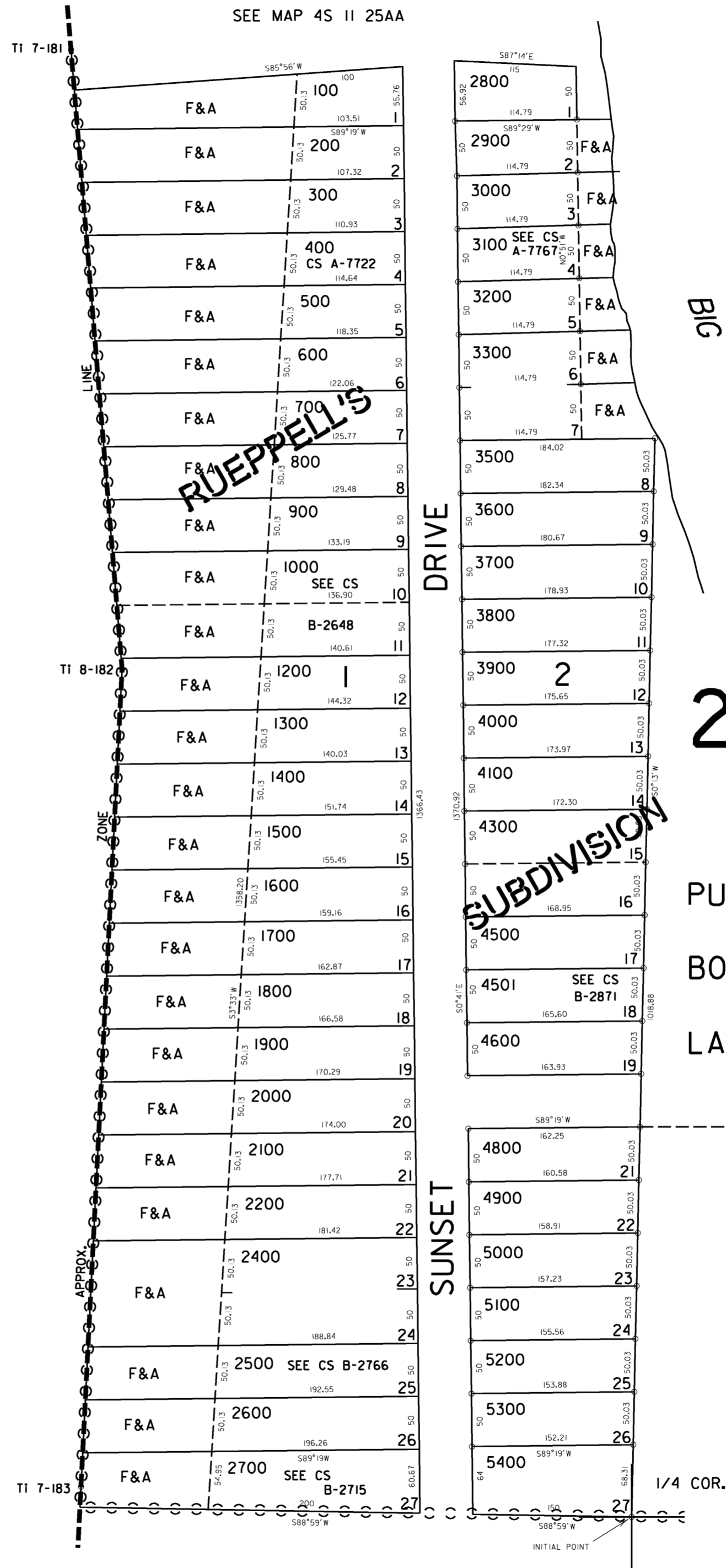
1" = 100'
SEE MAP 4S II 25AA

CANCELLED NO.

- 1100
- 2201
- 2300
- 3400
- 4200
- 4400
- 4700

OCEAN

PACIFIC



SEE MAP 4S 10 30

22-2

SUBDIVISION

SEE MAP 4S 10 30

4S II 25AD
PACIFIC CITY

REVISED 10/08/07, WS