

**MINUTES – TILLAMOOK COUNTY BOARD OF COMMISSIONERS' LEADERSHIP  
TEAM MEETING - Monday, February 13, 2012**

Page 1

**COMMISSIONERS PRESENT:**

Tim Josi  
Mark Labhart

**FILED**  
12:20pm  
SEP 21 2012

**COMMISSIONER ABSENT:**

Charles J. Hurliman

TASSI O'NEIL  
COUNTY CLERK

**STAFF PRESENT FOR PORTIONS OF THE MEETING:** Neal Lemery, Justice of the Peace; Denise Vandecoevering, Assessor; Emily Hurliman, Administrator, Circuit Court; Bill Sargent, County Counsel; Andy Long, Sheriff; Del Schleichert, Director Parks; Paul Levesque, Facilities, Fleet and Contracts Director; David Dickman, Director, Human Resources; Sara Charlton, Librarian; Marlene Putman, Administrator, Health Department, Director, Commission on Children and Families; Valerie Soilihi, Director, Community Development; William Porter, District Attorney; Dan McNutt, Surveyor; Deb Clark, Treasurer; Dan Krein, Director, Juvenile Department and Tassi O'Neil, Clerk.

**CALL TO ORDER:** By Chair Tassi O'Neil at 8:09 a.m. in Commissioners' Meeting Rooms A & B.

**ITEM NO. 1: ANNOUNCEMENTS:** There were no announcements

**ITEM NO. 2: BOOT ALLOWANCE:** Dave Dickman discussed the boot allowance and its purpose. Denise Vandecoevering said the appraisers believe they will be getting the allowance. Each department head must decide whether outdoor use in their department warrants that use. The county will set up a local account and pay the bill. Mr. Dickman said we need to control the appropriate type of footwear for Occupational Safety and Health Administration (OSHA) requirements.

Commissioner Labhart said at the Oregon Department of Forestry they set the standard and paid the allowance to the employee. Mr. Dickman said we are dealing with a variety of different outdoor uses at the county. He said we will float the first two years. Raingear was not intended to be included. Andy Long said the Sheriff's Office reimburses the amounts. Everyone wears the same boots. He said this works the best. Dan Krein said the union agreement says safety gear. Mr. Dickman said this would then include raingear. Management, during negotiations wanted the dollars spent locally. This will be discussed further next month.

**ITEM NO. 3: CAMERAS FOR SECURITY:** Ms. Vandecoevering wants to get a camera above the tax counter. They handled a lot of cash this year. She described the reasons why she feels one is justified. Neal Lemery said they have a camera that works well. Ms. Vandecoevering talked to Scott Kilgore. She doesn't think it will cost much but doesn't feel she should pay for it. Sheriff Long said we are about out of storage.

**MINUTES – TILLAMOOK COUNTY BOARD OF COMMISSIONERS' LEADERSHIP  
TEAM MEETING - Monday, February 13, 2012**

**Page 2**

There was a discussion about a single entrance to the courthouse as being in the distant future. Chair O'Neil wondered if the Assessor's camera could tie into the Clerk's system. Sgt. Scott could be provided access. Michael Soots was not present. Deb Clark thought the cost would be minimal if tied into Ms. O'Neil's unit and we could find the money. Ms. O'Neil will investigate.

**ITEM NO. 4: NEWSWORTHY DEPARTMENT UPDATES:** Judge Lemery and Denise Vandecoevering had nothing to report.

Emily Hurliman said courts are facing another cut during this session. She thanked Mr. Levesque for help with storage.

Sheriff Andy Long said he reviewed the rough draft of the courthouse emergency action plan. The "Little Byrne" grant will go away. He described the personnel staffing.

Del Schleichert had nothing to report.

Paul Levesque outlined the elements proposed to be included in the draft courthouse emergency action plan that he is preparing. It will go to the court security committee for review, then to the Leadership Team, and finally to the board for review.

Mr. Levesque updated everyone on the record storage project and progress on emptying the two storage units. The 10'x10' unit is now empty except for 11 empty file cabinets. The 10'x20' unit is about half empty. He is working with individual departments on records disposition.

Dave Dickman said effective March 1, retirement checks will come from Wells Fargo. They will become the trustee custodian. There are 143 from one provider and 91 from another that will be consolidated. We will continue to do the investment. They distribute the funds. We continued to be diversified.

Mr. Dickman said our new health insurance plan will continue to look and feel the same. We will get a prescription card where we will pay a co-pay of either \$25 or \$50 depending on whether it is formulary or nonformulary. The co-pay will not be applied to the deductible.

Mr. Dickman said the CIS conference will be at the end of the month. All three staff will be attending and the office will be closed February 29, April 1 and 2.

Mr. Dickman said in March there will be training on the new bargaining agreement.

**MINUTES – TILLAMOOK COUNTY BOARD OF COMMISSIONERS' LEADERSHIP  
TEAM MEETING - Monday, February 13, 2012**

**Page 3**

Commissioner Labhart distributed handouts about tsunami marine debris from the Japanese earthquake. Some plastics and wood could reach the west coast in 2012 with the rest in 2013. There is little concern about radioactivity.

Commissioner Labhart said the library levy will be on the ballot in May. If it does not pass, the library will close on July 1. There was also a discussion about the Veteran's levy. Bill Sargent reminded everyone about the requirements for campaign laws.

Commissioner Labhart talked about the Hastings bill moving through Congress. It will create management on federal forest lands. It is now falling apart. He discussed lobbying efforts. Secure Rural Schools is dead. Commissioner Josi said the Hastings bill is also dead in the Senate this year, but there is hope for next year when Senator Wyden is slated to chair the Natural Resources Committee. The Team discussed the task force concerning several O&C counties that may be headed for bankruptcy and the ramifications.

Sara Charlton reported on the computer upgrade at the library.

Marlene Putman said that over the last few weeks an additional year of transition for the Commission on Children and Families was approved. This is a work in process. She also reported on restructuring in the Health Department.

Valerie Soilihi said they continue implementing e-permitting. They are also doing a cost analysis on the programs and services they provide.

Bill Porter said there has been an increase in mental illness defenses. There are three or four in process.

Dan McNutt and Deb Clark had nothing to report.

Dan Krein said some of his funding will also be eliminated affecting prevention.

Chair O'Neil said she just completed redistricting.

**ITEM NO. 9: (TAKEN OUT OF ORDER) DATE AND TIME OF NEXT MEETING:**

March 5, 2012 at 8:00 a.m.

Commissioner Josi talked about the state forest budget, the drastic reductions coming in 3 years, and a bill before the legislature that affects the Board of Forestry. He doesn't think the bill will go anywhere. Commissioner Labhart said the governor will veto the bill.

**MINUTES – TILLAMOOK COUNTY BOARD OF COMMISSIONERS' LEADERSHIP  
TEAM MEETING - Monday, February 13, 2012**

Page 4

**ITEM NO. 5: GOAL SETTING AND ITEM NO. 6: FISCAL YEAR 2012-2013  
MANAGEMENT PLANNING:**

The team began by reviewing the proposed memo to the board with budget recommendations (see attached). Mr. Dickman also distributed a summary of current revenue problems (see attached). Some adjustments to the table were made. Mr. Dickman and Ms. Clark will revise and email it to everyone. This amount will take us down to the \$4,000,000 in the unappropriated ending fund balance.

Commissioner Labhart reviewed state forest revenue projections and the error made by the Oregon Department of Forestry (ODF) in its annual report on the projections. We still don't have an answer back from Salem. We actually project \$9,500,000 for distribution. Salem ODF was 100% off.

Ms. Clark said that if departments add people it will be problematic. It may be a more difficult budget session.

The team discussed the proposed memo to the board and whether each line item should be filled before moving to the next line or whether each line should be filled proportionately. Mr. Dickman said based on available information, the revenue stabilization fund would fund the \$330,000 Lommen Bridge and reduce the fund by that amount. Unless we move additional funds from Fund 193 to cover the deficits, we are looking at layoffs.

After some discussion and because of the short time period, it was decided to forego further recommendations until ODF clarifies the revenue picture, particularly for 2014. Mr. Dickman asked the team to decide whether the deficit should be covered by Fund 193. If not, it meant layoffs. Ms. Clark said she has a plan but needs to get the department budgets. It was decided to wait until the March 5 meeting after the budget requests are turned in.

**ITEM NO. 7: CONTINUITY OF GOVERNMENT/EMERGENCY PLAN:** This item was not discussed.

///

///

///

**MINUTES – TILLAMOOK COUNTY BOARD OF COMMISSIONERS' LEADERSHIP  
TEAM MEETING - Monday, February 13, 2012  
Page 5**

There being no further business Chair O'Neil adjourned the meeting at 10:00 a.m.

**RESPECTFULLY SUBMITTED** this 21<sup>st</sup> day of September, 2012.

County Clerk: Tassi O'Neil

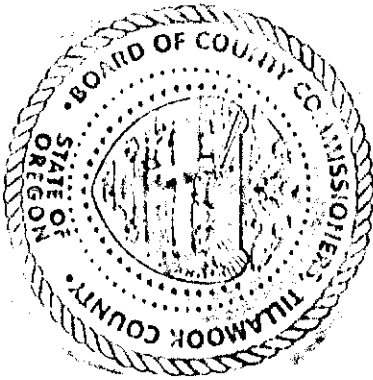
Susan L. Becraft  
Susan Becraft, Recording Secretary  
& Special Deputy

**APPROVED BY:**

Tassi O'Neil  
Chair

Mark Zeller  
Vice Chair

Charles J. Hartman  
Commissioner



**NOTICE OF LEADERSHIP TEAM MEETING**

**of the**

**TILLAMOOK COUNTY BOARD OF COMMISSIONERS**  
with Tillamook County Elected Officials  
and Department Heads

to be held

**Monday, February 13, 2012 at 8:00 a.m.**

**Commissioners' Meeting Rooms A & B**  
County Courthouse, 201 Laurel Avenue, Tillamook, Oregon

**BOARD OF COMMISSIONERS**

Tim Josi, Chair

E-mail: [tjosi@co.tillamook.or.us](mailto:tjosi@co.tillamook.or.us)

Mark Labhart, Vice Chair

E-mail: [mlabhart@co.tillamook.or.us](mailto:mlabhart@co.tillamook.or.us)

Charles J. Hurliman, Commissioner

E-mail: [churlima@co.tillamook.or.us](mailto:churlima@co.tillamook.or.us)

201 Laurel Avenue

Tillamook, Oregon 97141

Phone: (503) 842-3403 FAX: (503) 842-1384

**ANY QUESTIONS? Contact**

Paul Levesque (503) 842-1809

E-mail: [plevesqu@co.tillamook.or.us](mailto:plevesqu@co.tillamook.or.us)

**COUNTY WEBSITE:** <http://www.co.tillamook.or.us>

**NOTE:** The Tillamook County Courthouse is accessible to persons with disabilities. If special accommodations are needed for persons with hearing, visual or manual impairments who wish to participate in the meeting, please contact (503) 842-3403 at least 24 hours prior to the meeting so that the appropriate communications assistance can be arranged.

## AGENDA

CALL TO ORDER: Monday, February 13, 2012 8:00 a.m.

### 1. ANNOUNCEMENTS

#### NEW BUSINESS

2. Boot Allowance
3. Cameras for Security
4. Newsworthy Department Updates

#### OLD BUSINESS

5. Goal Setting
6. Fiscal Year 2012-2013/Management Planning
7. Continuity of Government/Emergency Plan
8. Space Committee

#### FUTURE BUSINESS

9. Date and Time of Next Meeting(s) – March 5, 2012 8:00 a.m.?

#### ADJOURN

#### BOARD MEETINGS AND ANNOUNCEMENTS

The commissioners will hold a workshop on **Monday, February 13, 2012** at **10:00 a.m.** with John Upton for a Quarterly Report on Tillamook County's Retirement Plan. This workshop was originally scheduled on January 30, 2012. The workshop will be held in the commissioners' meeting room B of the Tillamook County Courthouse, 201 Laurel Avenue, Tillamook.

The commissioners will hold an executive session on **Wednesday, February 15, 2012** at **8:00 a.m.** pursuant to ORS 192.660(2)(i) to conduct a performance evaluation. The executive session will be in the commissioners' meeting room A of the Tillamook County Courthouse, 201 Laurel Avenue, Tillamook. The executive session is not open to the public.

The commissioners will hold a workshop on **Friday, February 24, 2012** at **10:30 a.m.** with Health Department staff and the Community Health Council's Executive Team to discuss the 2011-2012 Health Department's Financial Plan. The workshop was originally scheduled on February 16, 2012. The workshop will be held in the commissioners' meeting room B of the Tillamook County Courthouse, 201 Laurel Avenue, Tillamook.

The Tillamook County Library, Tillamook County Courthouse, state courts, administrative offices in the jail and justice facility, the public works department and the health department will be **closed** on **Monday, February 20, 2012** for Presidents' Day.

There will be **no** commissioners' workshop or business meeting on **Wednesday, February 29, 2012** due to the lack of a quorum.

There will be **no** commissioners' workshop or business meeting on **Wednesday, March 21, 2012** due to the lack of a quorum.

The commissioners' evening board meeting schedule is as follows:

April 18, 2012

Manzanita City Hall

May 16, 2012

Kiawanda Community Center

There will be no evening meeting in March. All evening meetings will begin at 6:30 p.m.



2/13/12

# Leadership Team

NEAL LEMERY	Juvenile Court
Denise Vanderveer	Assessor/Tax Collector
Emily Hurliman	Circuit Court
Bill Sargent	CO. County
Andy Long	Sheriff's office
<del>Jo Schlichtert</del>	PARKS
Paul Levesque	BOC
David Dickman	HR
<del>Mark Labbe</del>	<del>BOC</del>
Sara Charlton	Library
Marlene Putman	H.D./CCF
VALERIE SOLITI	DCD
TIM JOSI	COMM.
William Rauten	PA
DAN MCHUTT	SURVEYOR
Deb Clark	Treasurer
Dan Krein	Jury
Tassi Owen	Clerk

# Marine Debris

NOAA Marine Debris Program | Office of Response and Restoration | NOAA National Ocean Service

## Facts About Marine Debris & How You Can Help

### What is marine debris?

Marine debris is any persistent solid material that is manufactured or processed and directly or indirectly, intentionally or unintentionally, disposed of or abandoned into the marine environment or the Great Lakes.

### Where does it come from?

- Land (e.g., from roadways to storm drains, canals, streams, and rivers, out to the ocean)
- Ocean (e.g., from a boat or platform into the ocean)

### What are the impacts?

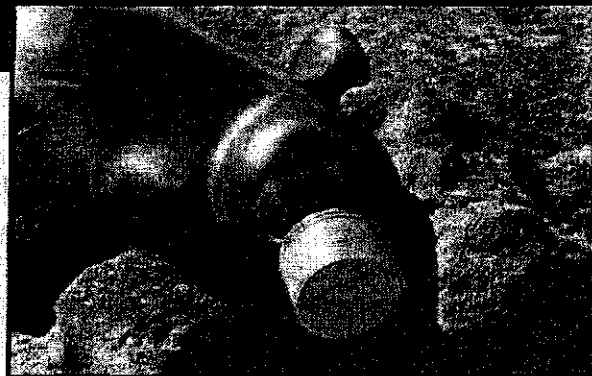
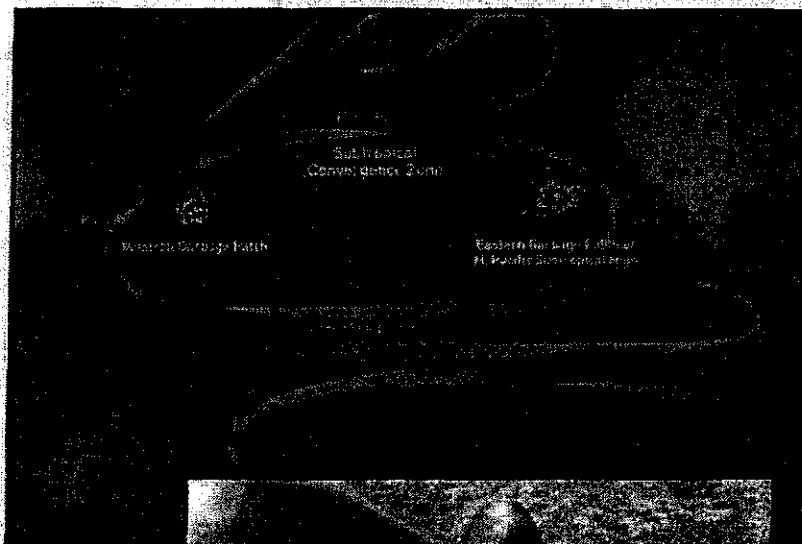
- Eyesore on beaches
- Habitat damage
- Wildlife entanglement
- Ingestion by wildlife
- Vessel damage and navigation hazard
- Human health and safety
- Alien species transport

### What are the "garbage patches"?

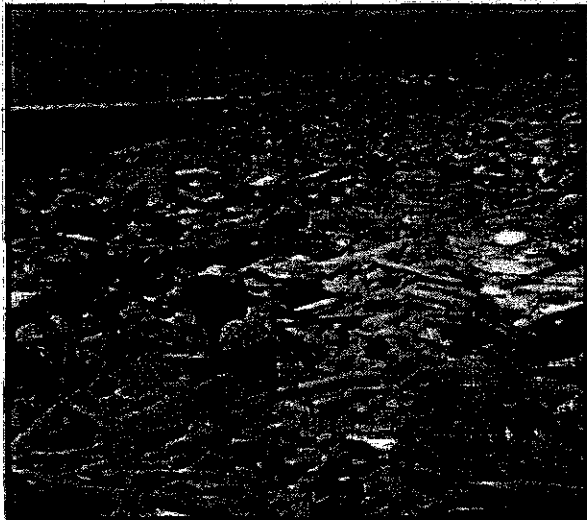
The "garbage patches" are areas of marine debris concentration (due to oceanographic features) in the North Pacific Ocean. The term "garbage patches" is a misnomer. There is no island of trash forming in the middle of the ocean nor a blanket of trash that can be seen with satellite or aerial photographs. This is likely because much of the debris found here is small bits of floating plastic not easily seen from a boat. Keep in mind that these oceanographic features change in size, location, and strength throughout the year.

The "eastern garbage patch" lies within the North Pacific Subtropical High, an area between Hawaii and California. The "western garbage patch" may lie within a small recirculation gyre near the Kuroshio current off the coast of Japan.

For more information visit: <http://marinedebris.noaa.gov/info/patch.html>



Marine debris of all sorts are a hazard to marine life such as this endangered Hawaiian monk seal. Photo courtesy of J. Higgins, NOAA PIFSC, permit MMPA-ES4848-1365.



Marine debris litters the shores of Kailua on the southeast coast of the Big Island of Hawaii.

## Plastic debris and pollutants

### What we know:

- Persistent organic pollutants (e.g., PCB) are in the water.
- Studies show plastic debris can transport organic contaminants in the oceans.
- Plastics are ingested by sea life.

### What we don't know:

- Do pollutants come off of the plastic debris and enter the organism once the debris is ingested?
- Are there marine food web impacts?

NOAA, with the University of Washington-Tacoma, coordinated two international research workshops (Sept. 2008 and Nov. 2010) to help shed light on this issue. This partnership continues to grow, as does work in this area.

## Do plastics degrade in the ocean?

Based on research to date, most commonly used plastics

do not ever fully "go away\*," but rather break down into smaller and smaller pieces (A. Andrady, pers. comm.). Also keep in mind that many of the bio-based and truly biodegradable plastics break down in a compost pile or landfill, but not necessarily in the ocean.

\* Here, "go away" refers to a process called mineralization, or the full conversion of all breakdown products into carbon dioxide, water, and small inorganic molecules (Andrady, 2003).

For more information visit: <http://marinedebris.noaa.gov/info/plastic.html>

## How YOU Can Help!

No matter how close to or far from the ocean, you can contribute to the solution!

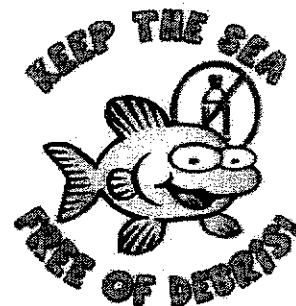
- Get involved! Participate in beach or stream cleanups in your area!
- Dispose of your trash properly!
- Remember that our land and sea are connected. Trash that enters streams or rivers eventually makes its way to the ocean.
- Reduce the amount of waste you produce.
- Reuse items whenever possible! Choose reusable items over disposable ones!
- Recycle as much as possible! Bottles, cans, bags, cell phones, and many other items can be recycled.
- Recycle your fishing line or throw it away in the proper place!

For more information visit [www.MarineDebris.noaa.gov](http://www.MarineDebris.noaa.gov)



Search "NOAA Marine Debris"

Blog reader? Check out <http://marinedebrisblog.wordpress.com>



February 8, 2012

To: Board of County Commissioner and County Budget Committee  
From: Tillamook County Leadership Team  
Subject: Budget Management Planning

The County Leadership Team met on February 2, 2012; and consists of Elected Officials and Department Directors. The purpose of this meeting was to collaboratively develop priorities for County budgeting processes. Although we made significant progress, more work needs to be completed as we move forward on County strategic planning. An important matter still to be addressed by the Leadership Team is a recommendation as to how these funds should be available for draw down in the form of some kind of "rainy day fund".

The Leadership Team recommends the following funding allocations in priority order:

1. The general fund unappropriated ending fund balance needs to always be maintained at minimum of \$4,000,000 or the amount needed to bridge the County minimal operational costs from July until November of each fiscal year.
2. Lommen bridge matching funds need to be funded at \$333,000 in the upcoming fiscal year and \$666,000 in the following fiscal year. This is a one time event priority as this bridge is scheduled for a 10 million replacement of which the County is required to match only 1 million dollars.
3. The Revenue Stabilization Fund (193) needs to be funded at a minimum of \$4,000,000 but with the goal of six months of operating revenue for the General Fund. In current dollars and current costs this is expected to be approximately 7.5 million dollars.
4. The Building Improvement Fund should be built up to a minimum of \$6,500,000 to provide \$5,000,000 in the event of a catastrophic building loss and a \$1,500,000 for ongoing capital improvement. As part of the fund build up recommendation a long term plan for replacement of the County Courthouse must be developed as well as other aging and inadequate facilities such as the Public Works offices and Central Shop.
5. Vehicle Replacement Fund – In the upcoming budget year we should start funding future vehicle purchases on an annual pro rata basis by department within the Vehicle Replacement Fund. Incremental funding must be commenced so as to replace end of life vehicles needed to carry out County business/
6. The Leadership Team recommends that the Department of Community Development be moved to the General Fund so long as a cost analysis is continued to move closer to revenue neutral position on fee supported services.
7. The Library, Parks and Health Departments should remain as separate funds.
8. The law enforcement funds should be allowed to build up to \$50,000 from Justice Court MIP funds. A concern raised in our discussions is the funding of prosecutions that may outstrip this

fund's ability to pay. The District Attorney will likely request contingency or other fund transfer if prosecution costs exceed this fund's ability to pay.

9. The Post Employment Liability Reserve Fund (195) should remain as is. Insurance cost for retirees should remain departmental costs accounted for in the budget process as apay as we go approach..

The Health Department outlined their financial framework and projects that there will not be any request for General Funds since they currently project to be in the black by the end of the year.

We hope these recommendations help guide the County as it sets it priorities and budgets for government services to our community.

Sincerely,

Tassi O' Neil  
County Clerk  
Chair, Leadership Team

**Current GF Revenue Problems  
2012-13**

approximates

1	Exhaustion of ARRA Grant Funds to Sheriff's Office (Jail)	\$	<del>(200,000.00)</del> This reflects a revenue reduction to the GF →
2	Health Department FQHC Cost over-run and lack of collections	\$	(50,000.00) Public Health appears to be closer to break even
3	Retirement Plan cost increases due to actuarial changes	\$	(435,000.00) Funding Plan at 20% of payroll (2% increase)
4	Community Development Department Cost over-run due. Fees insufficient to cover cost.	\$	(150,000.00)
5	Other possible fringe benefit cost increases to life insurance, health insurance, Rx Insurance, Dental Insurance, VEBA, vacation sell back, payroll taxes	\$	(100,000.00)
6	Current year and coming year cost of living adjustments (if any).	\$	(290,000.00)
7	The loss of the safety net legislation in Congress for the Secure Rural Schools, also known as O&C Funding or Federal Timber Receipts	\$	<del>(600,000.00)</del> (*265,000)
8	Tillamook County State Forest revenue sharing with the State of Oregon Forest Management.		
	<b>Total Projected Deficit Prior to new Requests</b>	\$	(1,825,000.00)
9	Public Works Road Fund GF Transfer	\$	(333,000.00)
10	Community Development GF Transfer		See 4 above
	<b>GRAND TOTAL (DEFICIT)</b>	\$	<b>(2,158,000.00)</b>

**Mark Labhart**

**From:** Mark Labhart  
**Sent:** Tuesday, February 07, 2012 2:19 PM  
**To:** Debra Clark; Chuck Hurliman; Paul Levesque; Tim Josi  
**Cc:** Tassi O'Neil  
**Subject:** Not Good news  
**Attachments:** Tillamook County General Fund Forest Revenue.ppt

After talking to Dan Goody (who is still checking) the figure we were all given at the CFTL Annual meeting and stated in the CFTL Annual Report for 2011 Table 7 is not accurate. ~~The figure Dan gave us most recently of \$9.5 million for FY 13 is the~~ most accurate number. This means a county GF figure of about \$2.85 million for FY 13 is about the same amount as was estimated to receive in FY 2012.

While Dan is still checking as to why the figure from the Annual Report is so far out of whack, we need to let the Leadership Team know that there is not going to be an increase in State Forest GF revenue as earlier estimated by ODF. I would be glad to discuss this at the LT meeting on Feb. 13th.

I have included the latest chart showing ODF's latest estimate.

This is a real bummer because we do not have the excess revenue we thought we might have.

**Mark Labhart**

Tillamook County Commissioner  
 201 Laurel  
 Tillamook, OR 97141  
 503-842-3403  
 503-801-1704 (cell)  
 503-842-1384 (fax)

---

**From:** Mark Labhart  
**Sent:** Friday, February 03, 2012 12:25 PM  
**To:** Dan Goody, Tillamook DF; Kate Skinner @ ODF  
**Cc:** Debra Clark; Chuck Hurliman; Paul Levesque; Tim Josi  
**Subject:** Questions

Hi Dan and Kate

I just got the Tillamook County Revenue projection for FY 13 and it shows \$9.5 million. I realize that the ODF estimate that you complete is organized on an annual basis to match Tillamook County's needs, from April to March. You develop those numbers in January of each year. The projected numbers on Table 7 of the State Forester's Annual CFTLC Report 2011 are from July 2011 (on a Fiscal Year basis July 1 through June 30) which included more up-to-date information on prices and reflect the higher bids received earlier this fiscal year.

These numbers are related to the strong export market.

Something still seems out of line for me. The CFTL table 7 below shows \$11,904,000 For the FY 2012 period (July thru June). The same table shows \$18,969,00 for FY 13 (July thru June). Your emailed estimate for FY 13 (April thru March shows \$9,520,677 or a difference of \$9 million dollars based upon the July thru June vs the April thru March periods. How could the estimate be off by \$9 million dollars. If you don't understand what I'm asking please call me.

Table 7. July 2011 County Share Revenue Projection by County

Fiscal Years 2012—2017

	FY 12	FY 13	FY 14	FY 15	FY 16	FY 17
County	FY 2012	FY 2013	FY 2014	FY 2015	FY 2016	FY 2017
Tillamook	\$11,904,000	\$18,969,000	\$16,794,000	\$14,420,000	\$14,641,000	\$15,577,000

The FY 11 (April thru March) estimate from ODF was \$9.9 million and we actually got \$9.6. Table 2 (July thru June) estimated \$9.3 which is close to what we actually got.

Table 2. County Share of Revenue from Board of Forestry Lands

Fiscal Years 2009—2011

County	FY 2009 <sub>1</sub>	FY 2010 <sub>2</sub>	FY 2011	5-Year Average	10-Year Average
Tillamook	\$11,508,426	\$10,901,019	\$9,277,054	\$11,964,682	\$12,070,148

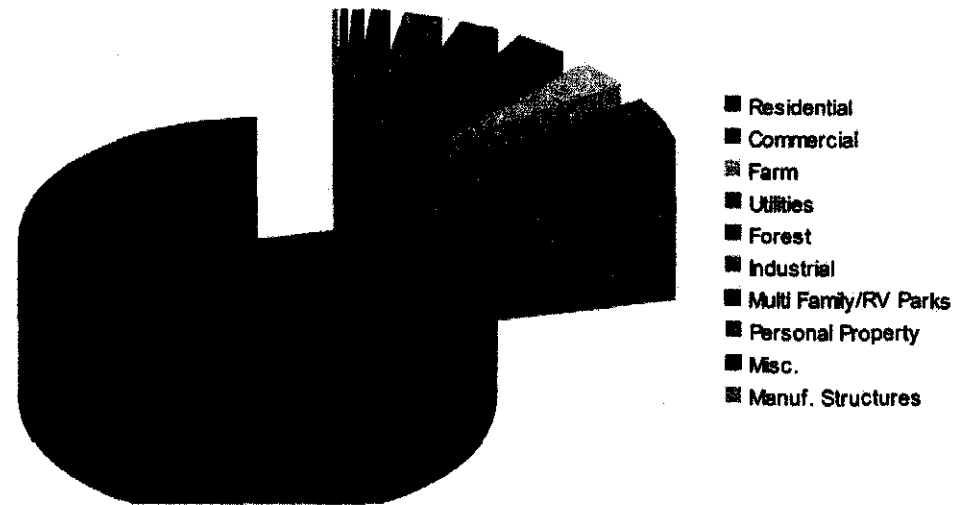
### Mark Labhart

Tillamook County Commissioner  
 201 Laurel  
 Tillamook, OR 97141  
 503-842-3403  
 503-801-1704 (cell)  
 503-842-1384 (fax)



Property Type	Tax Imposed	Percentage
<b>Residential</b>	<b>\$35,680,678.98</b>	<b>78.54%</b>
<b>Commercial</b>	<b>\$2,699,358.08</b>	<b>5.94%</b>
<b>Farm</b>	<b>\$1,673,540.10</b>	<b>3.68%</b>
<b>Utilities</b>	<b>\$1,661,152.32</b>	<b>3.66%</b>
<b>Forest</b>	<b>\$1,243,946.09</b>	<b>2.74%</b>
<b>Industrial</b>	<b>\$1,187,163.08</b>	<b>2.61%</b>
<b>Multi Family/RV Parks</b>	<b>\$552,430.86</b>	<b>1.22%</b>
<b>Personal Property</b>	<b>\$365,600.00</b>	<b>0.80%</b>
<b>Misc.</b>	<b>\$199,114.43</b>	<b>0.44%</b>
<b>Manuf. Structures</b>	<b>\$166,208.59</b>	<b>0.37%</b>
<b>Total</b>	<b>\$45,325,973.53</b>	<b>100.00%</b>

### Who Pays the Tax?



SCHOOL DISTRICTS	\$24,102,641.12	54.0%
TILLAMOOK COUNTY	\$7,702,866.27	17.3%
RURAL FIRE DISTRICTS	\$3,120,556.66	7.0%
COUNTY LIBRARY	\$2,899,376.36	6.5%
CITIES	\$1,784,094.78	4.0%
WATER & SANITARY DISTRICTS	\$1,717,422.95	3.8%
TILLA TRANSPORTATION	\$800,784.45	1.8%
NORTH CO REC DIST	\$789,188.94	1.8%
EMCD-911	\$753,940.28	1.7%
PORTS	\$353,994.64	0.8%
4H-EXTENSION SD	\$276,268.50	0.6%
TILLAMOOK URBAN RENEWAL	\$245,552.04	0.6%
GARIBALDI URBAN RENEWAL	\$38,812.95	0.1%
NEH BAY HEALTH DIST	\$31,021.12	0.1%
3 RIVER RD DIST	\$13,693.76	0.0%

### Who gets the Tax?

